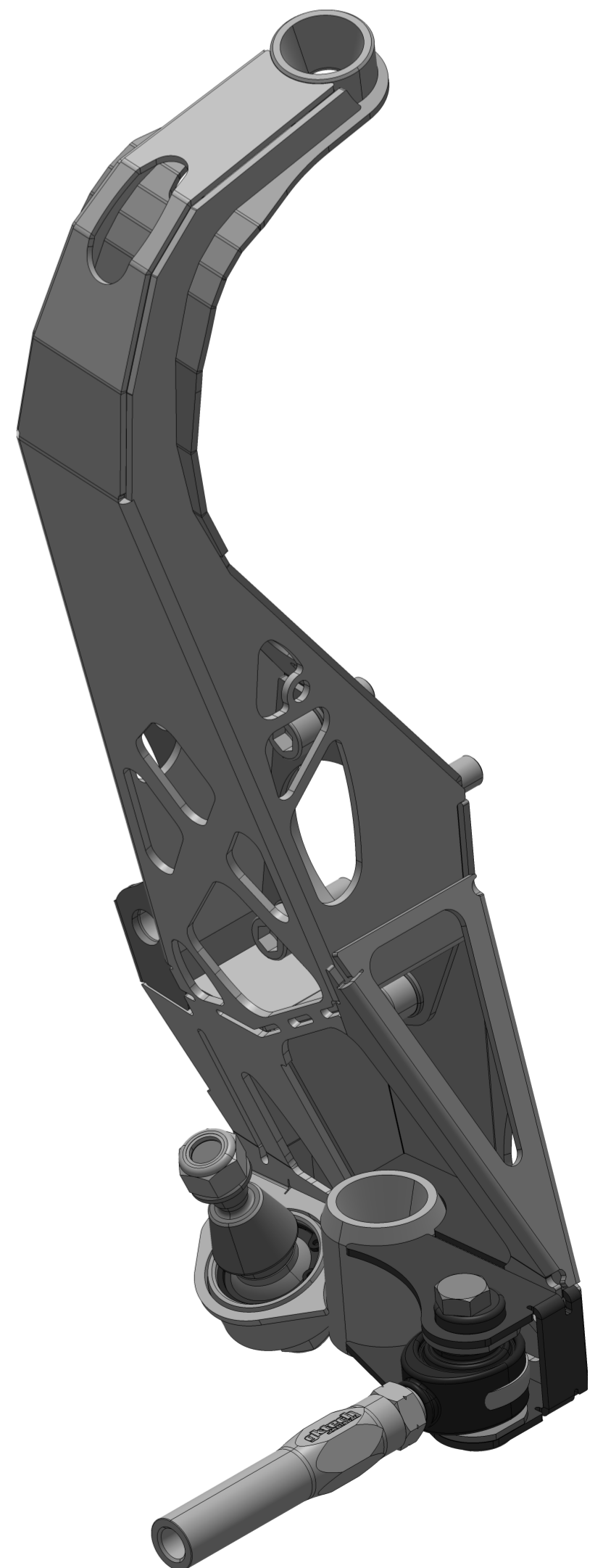
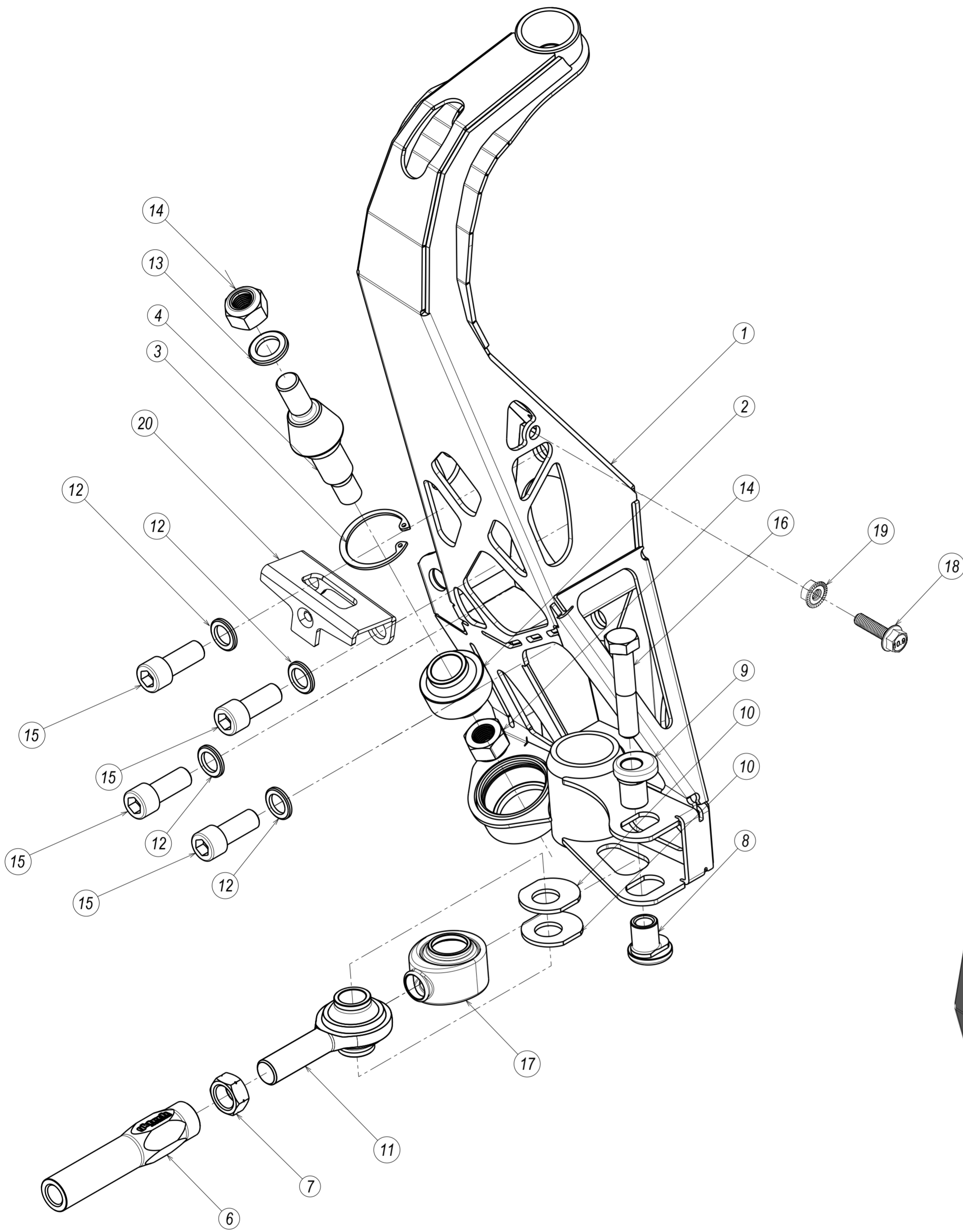


350Z-GKNK, 1/3 - PARTS



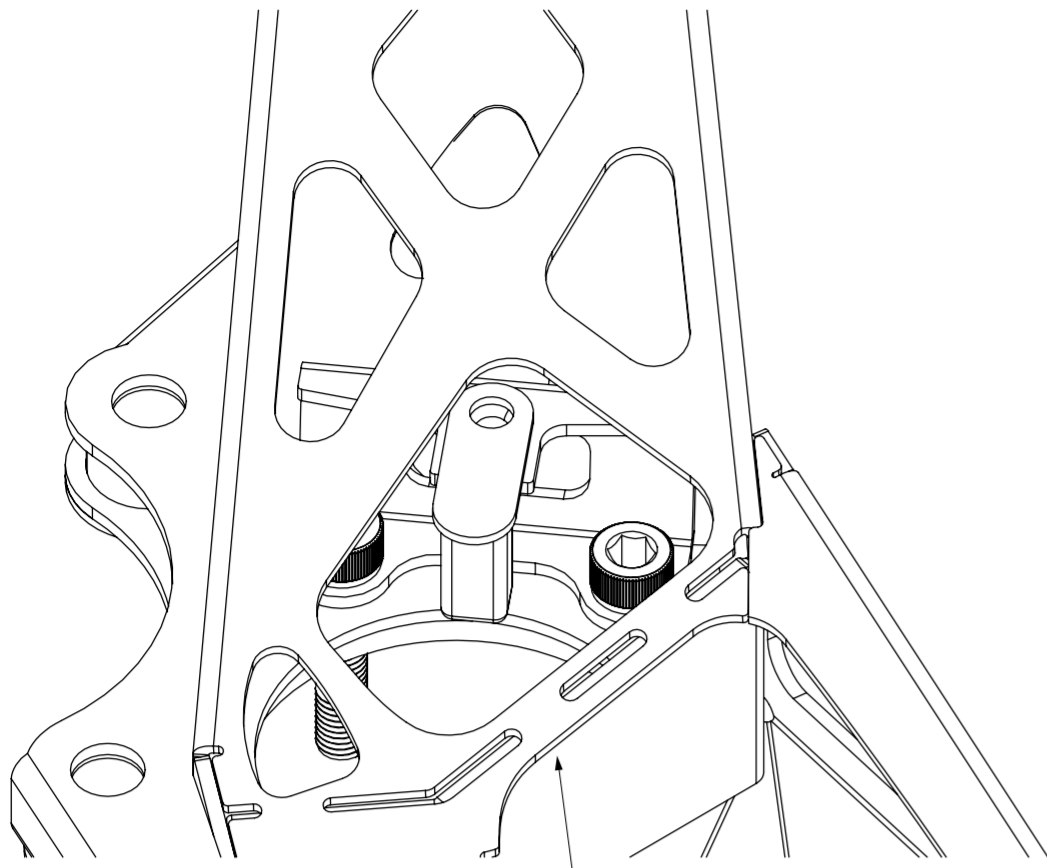
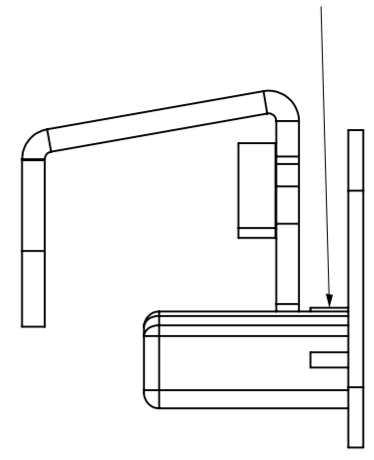
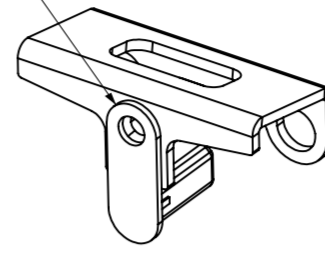
20	350Z DRIFT FRONT KNUCKLE ABS BRACKET	1
19	DIN 6923 FLANGE NUT M8x1.25 CLASS 8	1
18	DIN 6921 M8x1.25x30 8.8 FLANGED HEX HEAD BOLT	1
17	PCML10T BOOT	1
16	ISO 4014 BOLT M12x60 GRADE A STEEL 10.9	1
15	DIN 912 M12x1.25x30 10.9 HEX HEAD CAP SCREW	4
14	DIN 985-8 M14x1.5 NYLON LOCKING NUT	2
13	ISO 7092 WASHER 14x24 STEEL GRADE A PLAIN SMALL SERIES	1
12	ISO 7092 WASHER 12x20 STEEL GRADE A PLAIN SMALL SERIES	4
11	PCYML10T ROD END 5/8-18 L/H MALE	1
10	ACKERMANN OFFSET WASHER	2
9	ACKERMANN ADJUSTER 3mm SHEET - BOTTOM	1
8	ACKERMANN ADJUSTER 3mm SHEET - TOP	1
7	HEX JAM NUT 5/8-18 LH	1
6	THREAD ADAPTER M14x1.5 - 110mm	1
5	SPACER - 15.8x12x34	1
4	350Z GRIP KNUCKLE BALL JOINT SHAFT	1
3	DIN 472 RETAINING RING 40x1.75	1
2	BEARING YPB12T	1
1	350Z GRIP KNUCKLE WELD ASM - R/H	1
PC NO	COMPONENT NAME	QTY

350Z-GKNK, 2/3 - INSTALL

STEP 1.

INSTALL WHEEL SPEED SENSOR TO BRACKET USING OEM BOLT
TORQUE TO 9.9 Nm (7.3ft-lbs)

MAY NEED TO REMOVE SMALL
RAISED SECTION FROM THE SPEED
SENSOR TO FIT TO BRACKET



STEP 2.

MOUNT WHEEL HUB TO STEERING
KNUCKLE AND WHEEL
SPEED SENSOR BRACKET
TIGHTEN BOLTS (4x) TO 90Nm (65 lbs-ft)

STEP 3.

INSTALL COMPRESSION ROD TO
UPRIGHT AND TIGHTEN BALL
JOINT TO 90Nm (65 lbs-ft)

STEP 8.

INSTALL THE BRAKES AND TIGHTEN
CALIPER BOLTS TO 150Nm (130 lbs-ft)

STEP 6.

TIGHTEN TOP A-ARM
TO 60Nm (43 lbs-ft)

STEP 7.

ADJUST STEERING LIMITER, TIGHTEN
TOE LINK TO 90Nm (65 lbs-ft)

BUMP STEER IS ADJUSTABLE - LEAVE OUTER TIE ROD
BETWEEN SPACERS IF BUMPSTEER IS NOT MEASURED

SPACER FLAT SIDES TO BE PARALLEL WITH BENDS ON THE
STEERING KNUCKLE

ACKERMANN WASHERS ARE OFFSET TOWARDS INSIDE OF
THE CAR BY DEFAULT

STEP 4.

INSTALL STEERING KNUCKLE
ONTO BOTTOM A-ARM AND
TIGHTEN BALL JOINT TO 90Nm
(65 lbs-ft)

STEP 5.

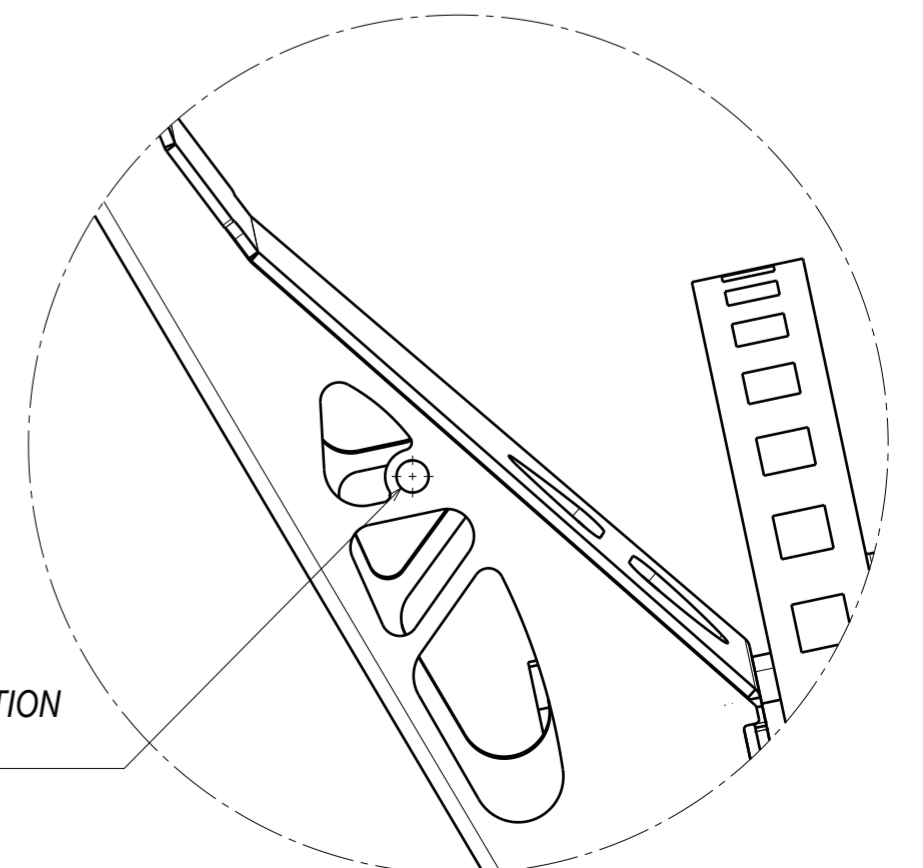
INSTALL BALL JOINT SHAFT
INTO BOTTOM A-ARM AND
TIGHTEN 90Nm (65 lbs-ft)

STEP 9.

ADJUST TOE AND CHECK CLEARANCE FOR ALL COMPONENTS

STEP 10.

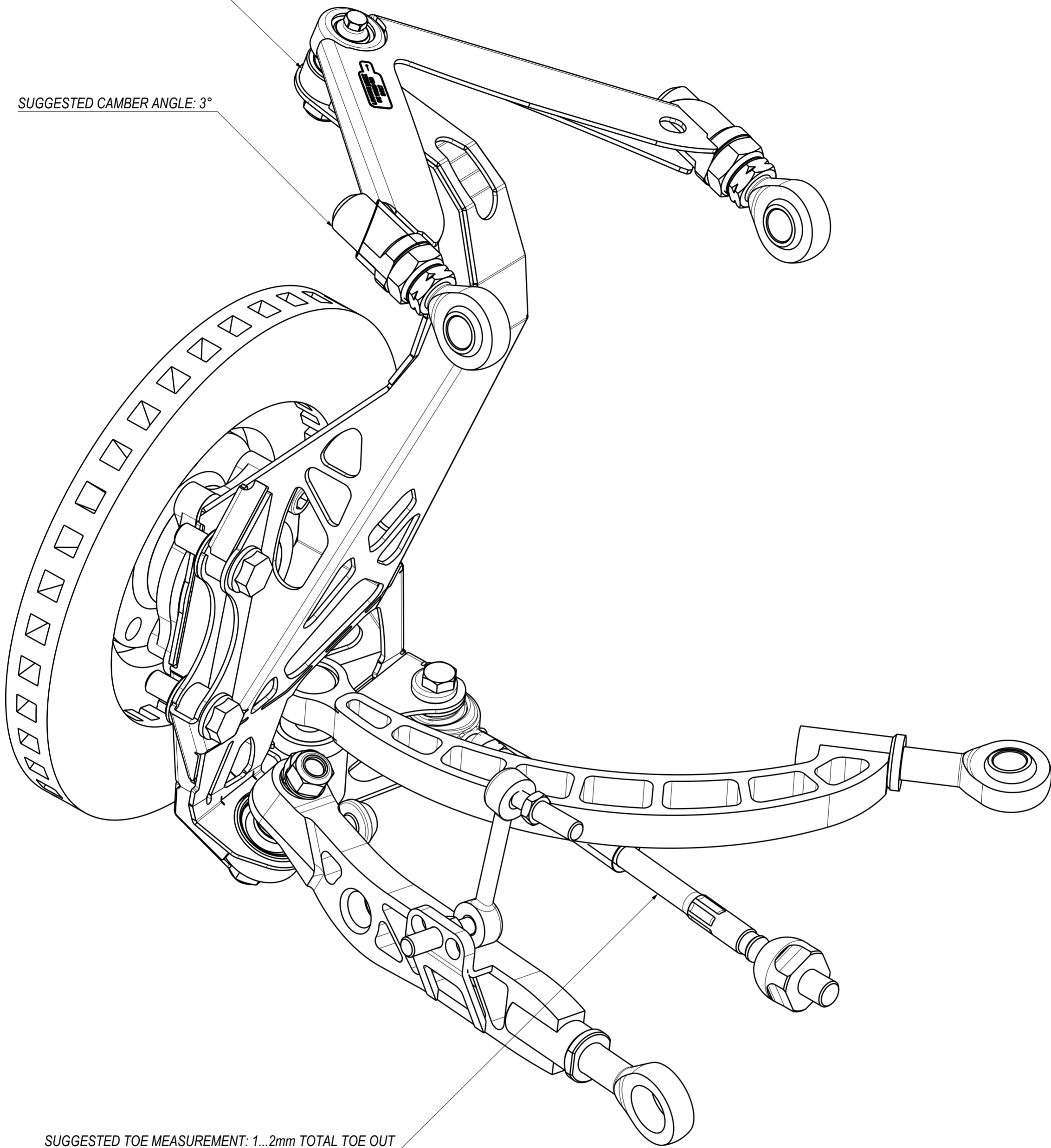
INSTALL BRAKE LINE JUNCTION USING
SUPPLIED M8 BOLT AND NUTS
INSERT BOLT FROM THE INSIDE AND
TIGHTEN NUT ONTO BRAKE LINE JUNCTION
TIGHTEN TO 21.7 Nm (16.0 ft-lbs)



350Z-GKNK, 3/3 - ALIGNMENT

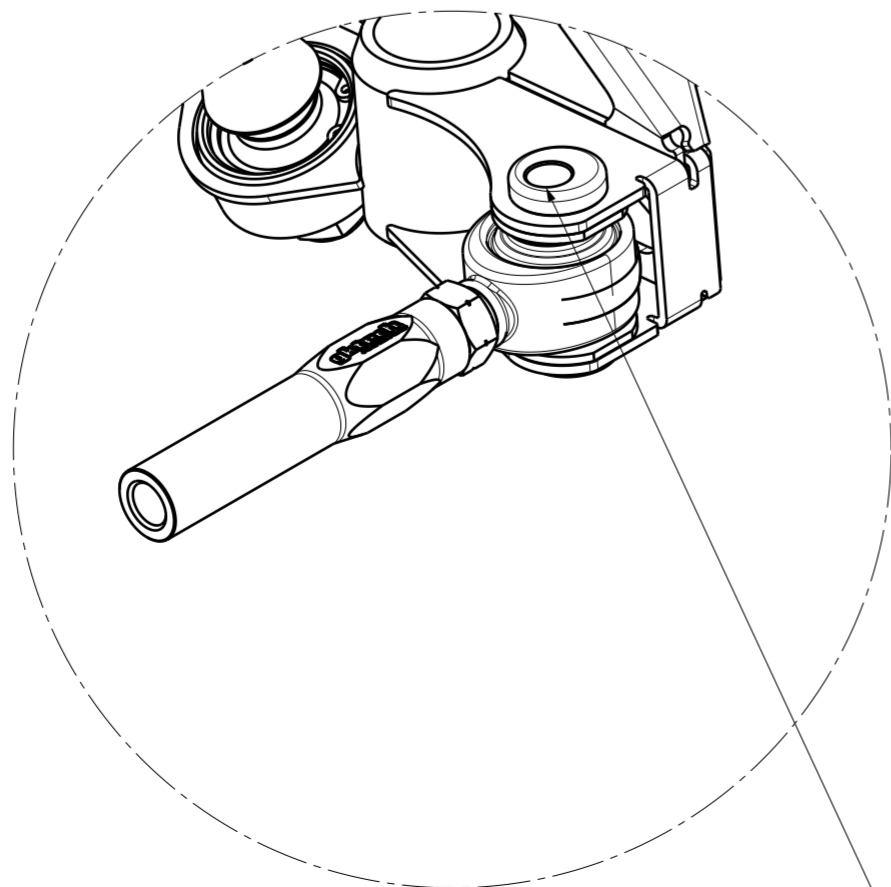
SUGGESTED CASTER ANGLE: 9°

SUGGESTED CAMBER ANGLE: 3°

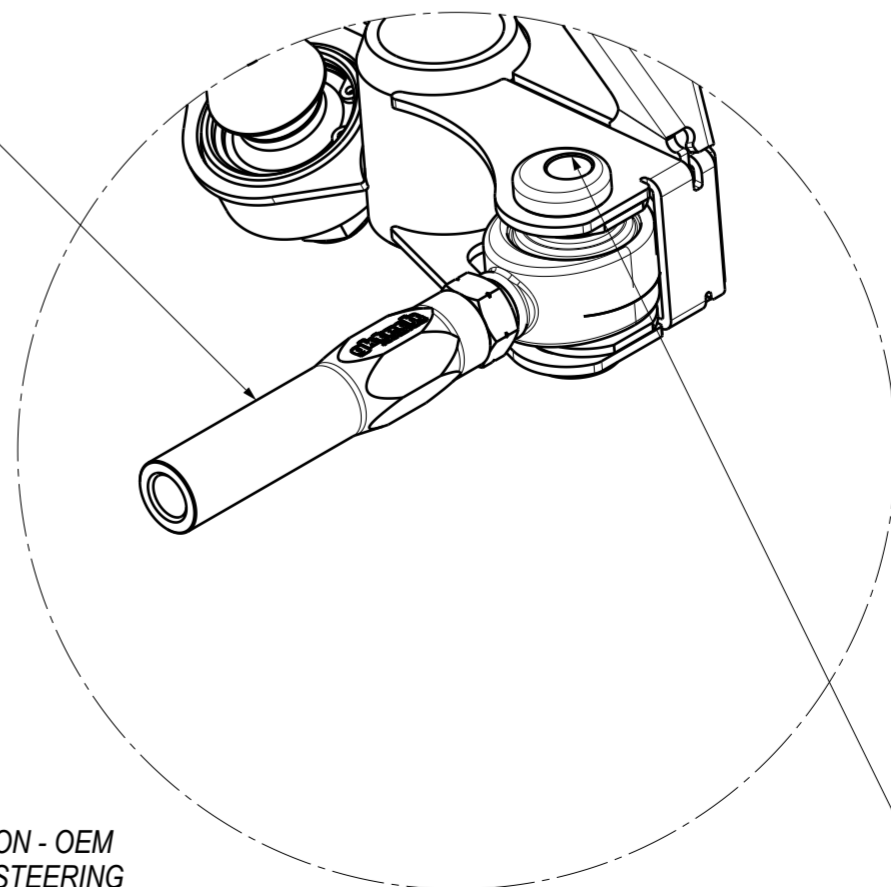


SUGGESTED TOE MEASUREMENT: 1...2mm TOTAL TOE OUT

HOLD EXTENDER AND TURN TIE ROD FOUR FULL TURNS TO
RETAIN ALIGNMENT BETWEEN ACKERMANN POSITIONS



INNER POSITION - OEM
ACKERMANN STEERING
ANGLE



OUTER POSITION - LESS
ACKERMANN STEERING
ANGLE