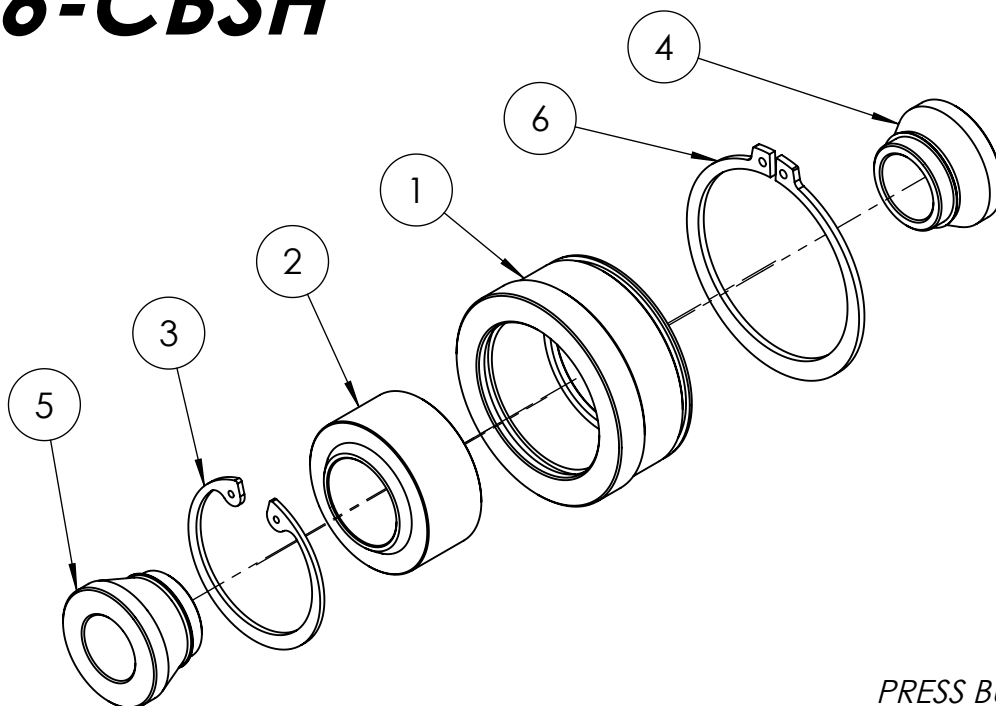
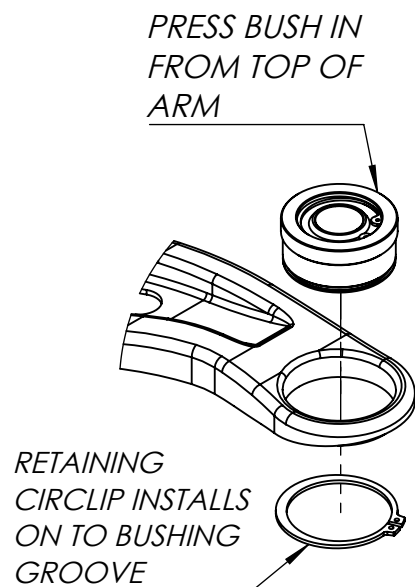


# GT86-CBSH



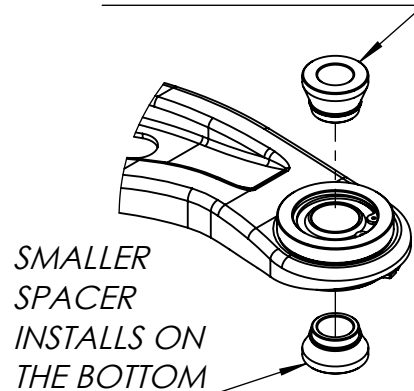
## DIAGRAM A

1. REMOVE LOWER CONTROL ARM FROM THE VEHICLE.
2. USE A PRESS TO REMOVE THE OEM BUSH.
3. PRESS THE NEW BEARING HOUSING INTO THE ARM FROM THE TOP SIDE AS SHOWN IN DIAGRAM B.  
*(ALTERNATIVELY USE A RUBBER Mallet OR A HAMMER AND WOODEN BLOCK).*
4. RE-INSTALL THE ARM USING THE SPACERS AS SHOWN IN DIAGRAM C.
5. REPEAT STEPS 1-6 FOR THE OTHER SIDE OF THE VEHICLE.



## DIAGRAM B

LARGER SPACER INSTALLS ON THE TOP



## DIAGRAM C

ITEM NO.	DESCRIPTION:	QTY:
1	GT86 LOWER LEADING INNER BEARING HOUSING	2
2	COM16-T SPHERICAL BEARING	2
3	ASME B18.27.1, INTERNAL RETAINING RING	2
4	COM16T SPACER, 19ID-52.8W	2
5	COM16T SPACER, 19ID-61W	2
6	ASME B18.27.1, EXTERNAL RETAINING RING	2