

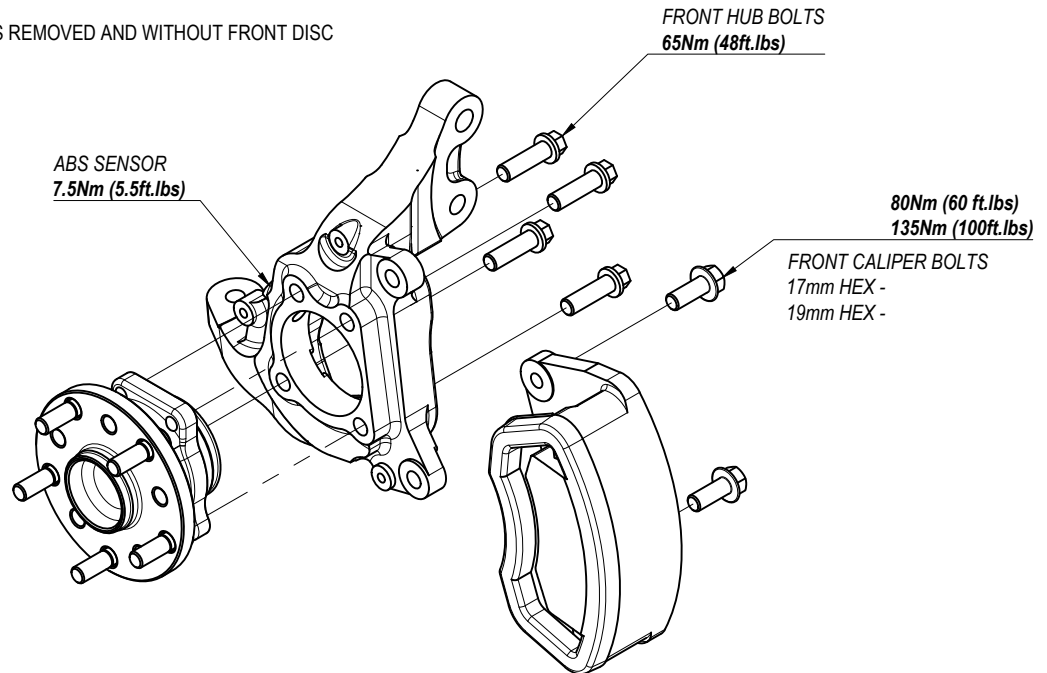
GT86-FCNV

1. REMOVE WHEEL, BRAKE CALIPER, OEM BRAKE ROTOR, ABS SENSOR AND OEM HUB
2. INSTALL CONVERSION HUB ONTO UPRIGHT USING OEM HUB BOLTS

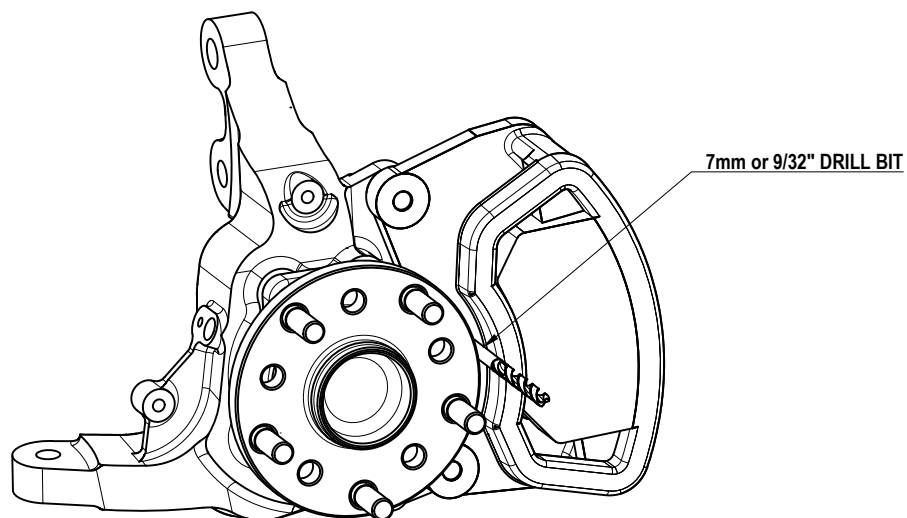
**** IF RUNNING BREMBO BRAKES SKIP STEPS 3, 4, 5 ****

****FOR BREMBO BRAKES CHECK INSIDE OF ROTOR IS FLAT FOR HUB TO MOUNT TO SOME ROTORS HAVE INTERNAL LIP THAT IS NOT COMPATIBLE****

3. RE-INSTALL CALIPER WITH BRAKE PADS REMOVED AND WITHOUT FRONT DISC



4. CHECK CALIPER TO HUB FLANGE CLEARANCE AS SHOWN IN BELOW DIAGRAM, THIS CAN BE DONE USING A 7MM OR 9/32" (7.20MM) DRILL BIT
5. MARK CALIPER WHERE CLEARANCE IS REQUIRED, REMOVE TOP CALIPER BOLT TO ACCESS AND GRIND AWAY MARKED AREA. REMOVE MATERIAL SLOWLY AND CHECK FREQUENTLY UNTIL ATLEAST 7MM OF CLEARANCE IS ACHIEVED



6. INSTALL CHOSEN FRONT ROTOR SOLUTION AND CONFIRM CLEARANCE BETWEEN ROTOR HAT AND CALIPER
7. TORQUE ALL BOLTS TO SUPPLIED SPECIFICATIONS AND INSTALL WHEELS