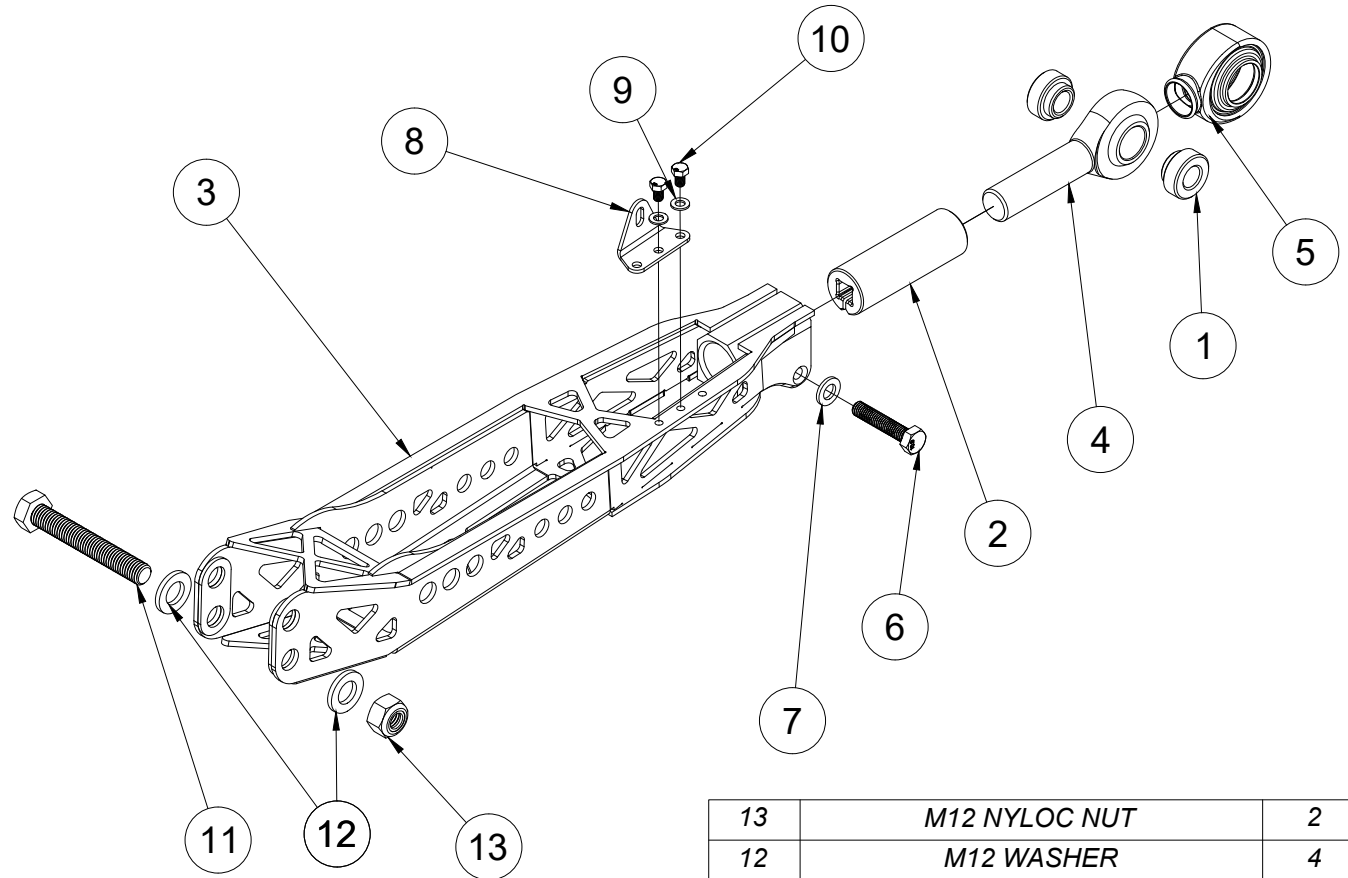
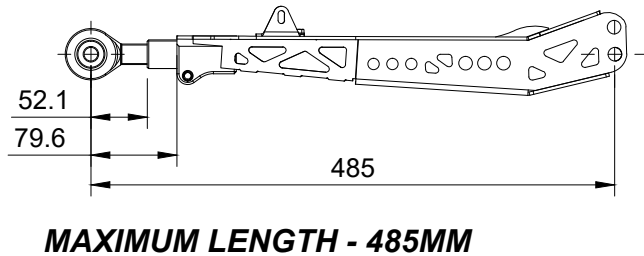
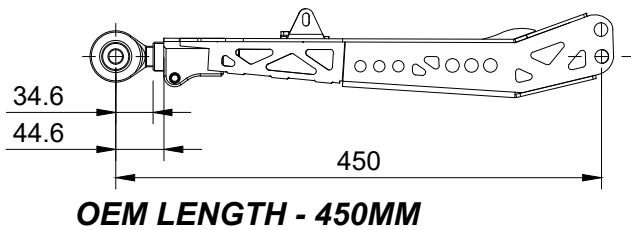
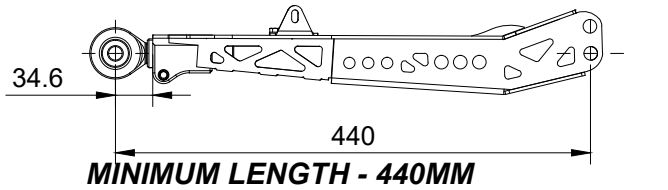


# GT86-RLCA

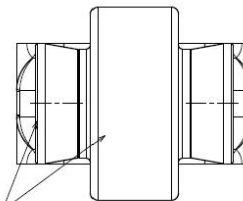


13	M12 NYLOC NUT	2
12	M12 WASHER	4
11	M12 x 80 SCREW	2
10	M5 x 8 SCREW	2
9	M5 WASHER	2
8	HEADLIGHT SENSOR BRACKET	1
7	M8 WASHER	2
6	M8 x 40 SCREW	2
5	DUST BOOT	2
4	3/4 IN, ROD END, LH	2
3	REAR LOWER CAMBER ARM	2
2	3/8IN DOUBLE ADJUSTER	2
1	42MM WIDTH SPACER	4
<b>ITEM:</b>	<b>DESCRIPTION:</b>	<b>QTY:</b>
<b>PARTS LIST:</b>		

**gktech**  
com

**CRITICAL!**

CHECK FOR ROD END BEARING ALIGNMENT  
AFTER TIGHTENING THE ADJUSTING MECHANISM  
ROD END TO BE PERPENDICULAR TO THE SPACERS



# GT86-RLCA

**BOLT TORQUE:**  
15NM (11ft-lb)

**\*\*CRITICAL\*\*** DEPENDING ON MAKE AND MODEL,  
HEADLIGHT SENSOR BRACKET MAY NOT BE REQUIRED.  
CHECK BEFORE INSTALLATION

**HEADLIGHT SENSOR BRACKET LENGTH ADJUSTMENT**  
BRACKET MOUNTING LOCATION FOR OEM ARM  
LENGTH PICTURED

**\*\*CRITICAL\*\*** CHECK CLEARANCE TO  
SUBFRAME IN THIS AREA. CLEARANCE SUBFRAME  
AS REQUIRED

**OEM BOLT TORQUE:**  
80NM (59ft-lb)

**MOTION RATIO ADJUSTMENT**  
STRUT MOUNTING HOLES ALLOW  
MOTION RATIO ADJUSTMENT

SOFTER  
↑  
STIFFER

**LENGTH ADJUSTMENT:**  
3/8IN DRIVE  
CLOCKWISE TO INCREASE LENGTH

**BOLT TORQUE:**  
50NM (36.9 ft-lb) - LUBRICATE THREADS  
LOCKING BOLT MUST BE LOOSE FOR  
MAKING ADJUSTMENTS.

35MM EXTENDED

17.5MM EXTENDED

**OEM SWAY BAR BOLT TORQUE:**  
38NM (28ft-lb)

**OEM STRUT BOLT TORQUE:**  
80NM (59ft-lb)

**RIDE HEIGHT ADJUSTMENT**  
USE UPPER HOLE TO  
LOWER VEHICLE BY  
25MM (1INCH)

**OEM BOLT TORQUE:**  
80NM (59ft-lb)

**gktech**  
.com