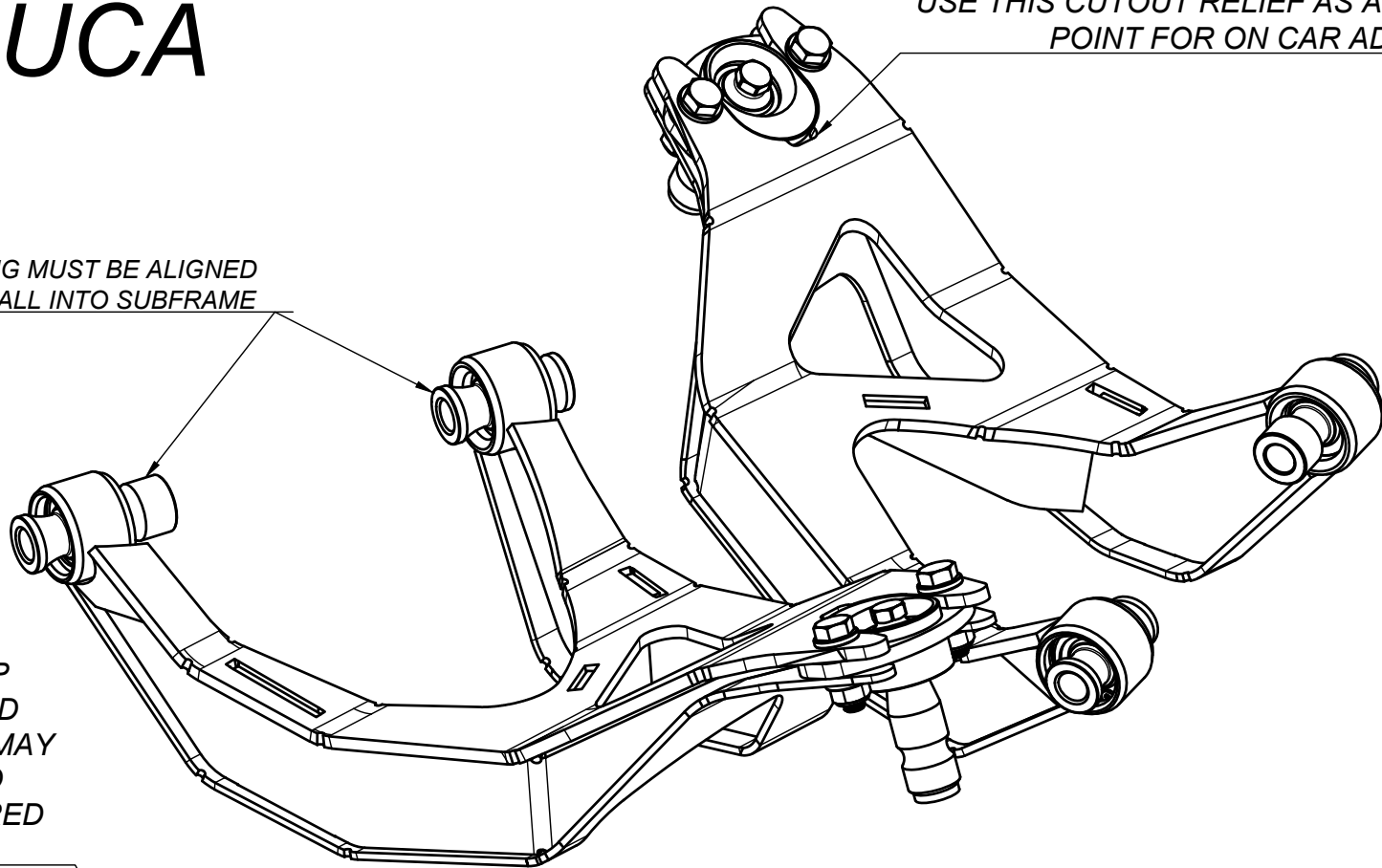


GT86-RUCA

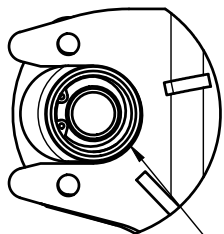
USE THIS CUTOUT RELIEF AS A LEVERAGE POINT FOR ON CAR ADJUSTMENT

SPHERICAL BEARING MUST BE ALIGNED TO INSTALL INTO SUBFRAME



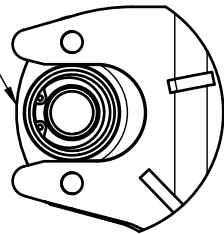
!! CRITICAL !!
ENSURE THAT CIRCLIP EARS FACE OUTBOARD FROM VEHICLE. THIS MAY NEED TO BE ROTATED DEPENDING ON DESIRED ADJUSTMENT.

MINIMUM LENGTH



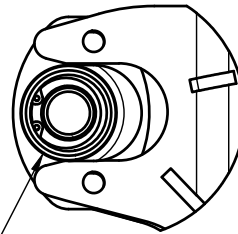
OEM -10mm

OEM LENGTH



BEARING HOUSING IS ROTATED 180° DEPENDING ON DESIRED ADJUSTMENT

MAXIMUM LENGTH

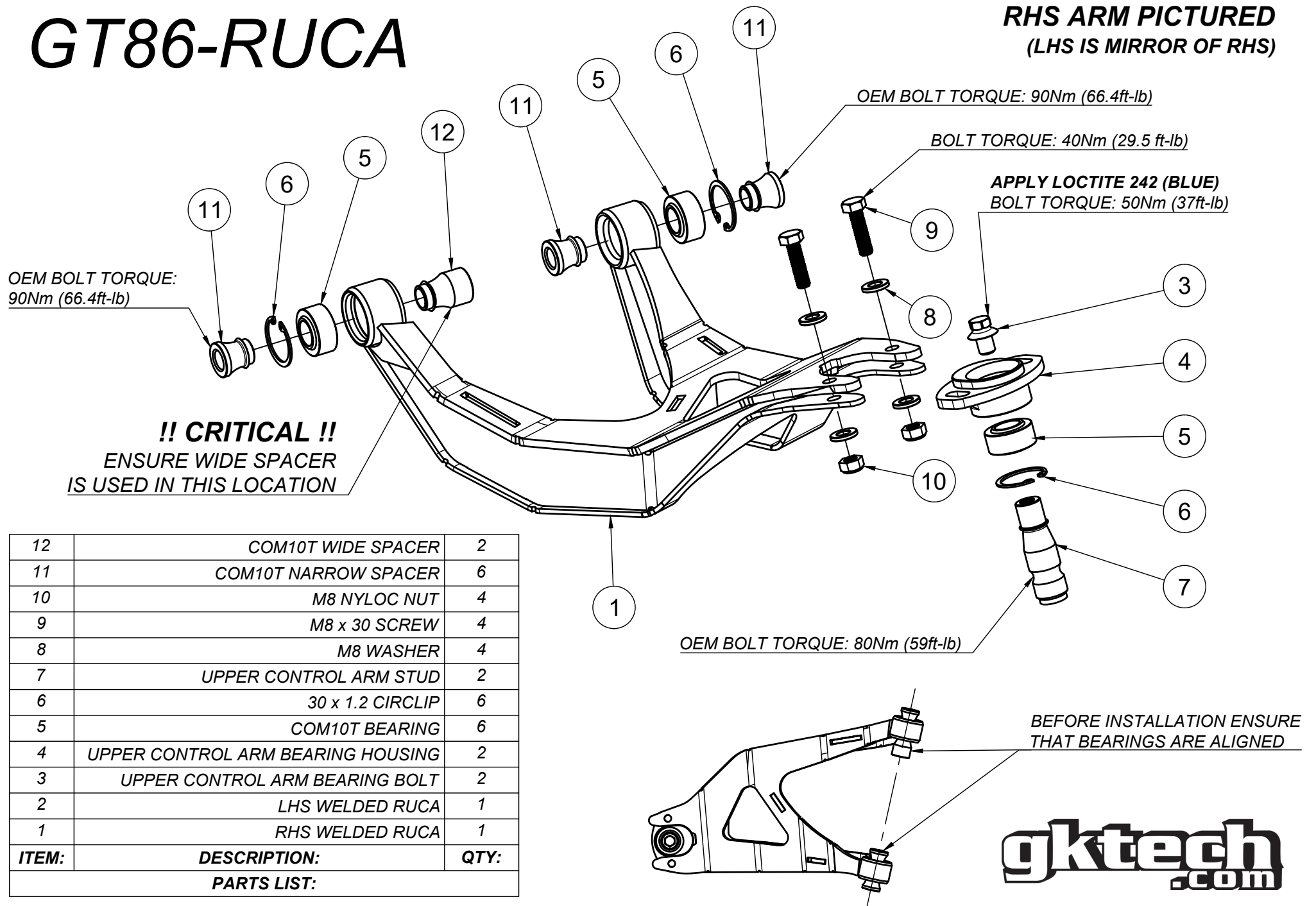


OEM +10mm

gktech
.com

GT86-RUCA

RHS ARM PICTURED
(LHS IS MIRROR OF RHS)



OEM BOLT TORQUE:
90Nm (66.4ft-lb)

OEM BOLT TORQUE: 90Nm (66.4ft-lb)

BOLT TORQUE: 40Nm (29.5 ft-lb)

APPLY LOCTITE 242 (BLUE)
BOLT TORQUE: 50Nm (37ft-lb)

!! CRITICAL !!
ENSURE WIDE SPACER
IS USED IN THIS LOCATION

OEM BOLT TORQUE: 80Nm (59ft-lb)

BEFORE INSTALLATION ENSURE
THAT BEARINGS ARE ALIGNED

12	COM10T WIDE SPACER	2
11	COM10T NARROW SPACER	6
10	M8 NYLOC NUT	4
9	M8 x 30 SCREW	4
8	M8 WASHER	4
7	UPPER CONTROL ARM STUD	2
6	30 x 1.2 CIRCLIP	6
5	COM10T BEARING	6
4	UPPER CONTROL ARM BEARING HOUSING	2
3	UPPER CONTROL ARM BEARING BOLT	2
2	LHS WELDED RUCA	1
1	RHS WELDED RUCA	1
ITEM:	DESCRIPTION:	QTY:
PARTS LIST:		

gktech
.com