

# REAR-KNCK 1/2

TIGHTEN DRUM BRAKE CARRIER (IF USED) TO 200Nm (190 lbs-ft).

NB! DRUM BRAKE SYSTEM INSTALLED FIRST (IF USED)

SUGGESTED CAMBER ANGLE FOR DRIFTING: 0...-0,5°  
SUGGESTED CAMBER ANGLE FOR RACING: -2°...-2,5°  
START WITH OEM CAMBER ARM LENGTH 308mm  
TIGHTEN TO 77-98Nm (57-72 lbs-ft)

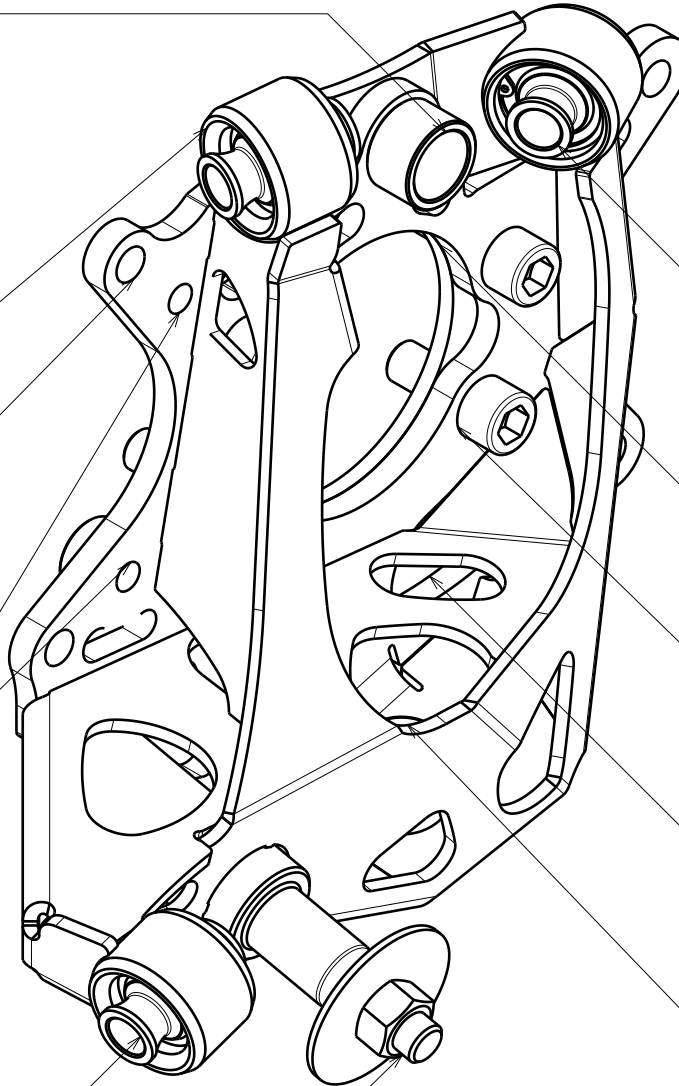
TIGHTEN TO 72-97 Nm (53-72 lbs-ft)

PROVISIONS FOR WILWOOD 120-10188 CALIPER  
MUST USE SUPPLIED SPACERS ON THE HUB SIDE, BOLT M10x1.25x30

TIGHTEN TO 20Nm ( 14lbs-ft)

SUGGESTED TOE IN PER SIDE: 0...6mm  
START WITH OEM TOE LINK LENGTH: 355mm  
TIGHTEN TO 77-98Nm (57-72 lbs-ft)

TIGHTEN TO 88-108 Nm (65-80 lbs-ft)



TRACTION ARM TO BE INSTALLED ON THE KNUCKLE FIRST, THEN CHASSIS

TIGHTEN TO 77-98Nm (57-72 lbs-ft)

TRACTION ROD LENGTH:  
S13(R32): 210 mm  
S14(S15, R33,R34) 200 mm  
NEW LENGTHS FOR V2 KNUCKLE

FOR BEST RESULTS, USE S14(S15, R33, R34) SUBFRAME

ON S13 LOWER A-ARM FRONT PICKUP TO BE LOWERED BY 50 mm -  
SUGGESTED TRACTION ROD LENGTH 225mm  
USEGKTECH RELOCATION BRACKET FOR OPTIONAL PERFORMANCE

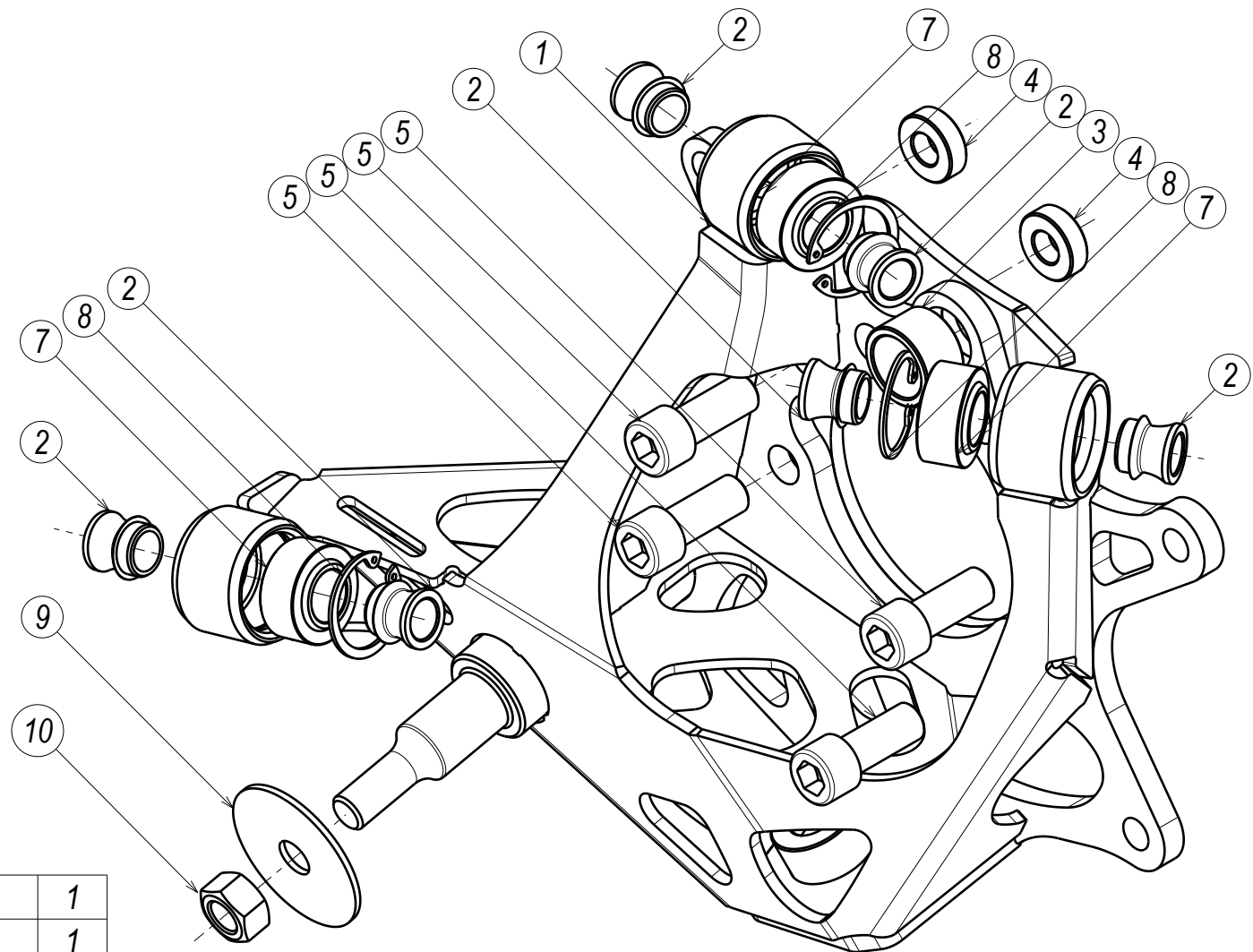
TIGHTEN AXLE NUT TO 235-314 Nm (174-231 lbs-ft)

TIGHTEN WHEEL HUB BOLTS (4x) TO 78-98 Nm (58-72 lbs-ft)

**DRUM BRAKE (IF USED) CABLE TO BE ROUTED THROUGH THIS OPENING AND RECONNECTED WHEN THE UPRIGHT IS MOUNTED ON THE CAR**

TIGHTEN BALL JOINT NUT TO 71-86 Nm (52-64 lbs-ft)  
1/2 SOCKET EXTENSION WILL CLEAR OEM S-CHASSIS AXLES (22 mm SOCKET) - IMPACT CAN BE USED

# REAR-KNCK 2/2



10	ISO 8673 M12X1.25-10 NUT	1
9	S14 STRUT WASHER	1
8	CIRCLIP DIN 472 - 30x1,2	3
7	SPHERICAL BEARING COM10T	3
5	DIN 912 M12x1.25x30 10.9	4
4	WILWOOD HANDBRAKE CALIPER ADAPTER	2
3	HANDBRAKE CARRIER SPACER	1
2	REAR KNUCKLE MISALIGNMENT SPACER	6
1	REAR KNUCKLE	1
PC NO	COMPONENT NAME	QTY