

# S13X-RLCA

3. MOUNT BRACKET WITH 3 BOLTS (TOP AND ANTI-ROLL BAR)

1. REMOVE LOWER A-ARM

7. REMOVE A-ARM AND INSTALL SPACER WITH THE SUPPLIED THICK WASHER

6. TEST FIT LOWER A-ARM AND TORQUE DOWN ALL 4 BOLTS

9. REMOVE AREA BELOW RED LINE AND ADD A WELD AT THE CUTOUT

8. WELD AS SHOWN IN FIGURES 1. AND 2.

4. MARK THE LIP (GREEN) INSIDE THE BRACKET ON THE SUBFRAME AND REMOVE IT

5. REINSTALL BRACKET AND MOUNT ALL 3 BOLTS

2. REMOVE ANTI-ROLL BAR

10. RE-INSTALL ANTI-ROLL BAR AND LOWER A-ARM. INSERT CAN BE FITTED TO OEM POSITION OF THE BRACKET FOR BRACING PURPOSE

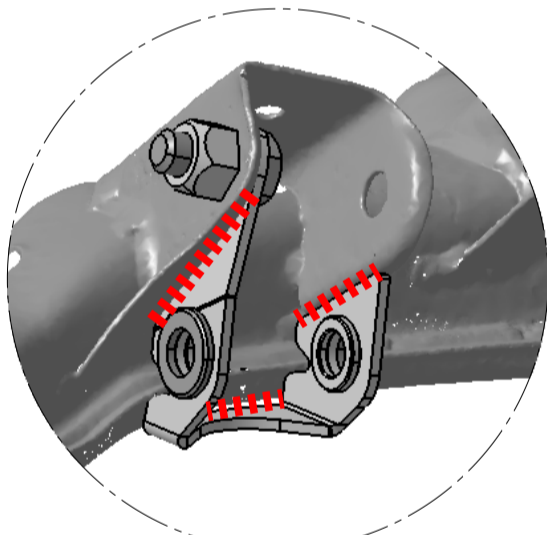


FIGURE 1

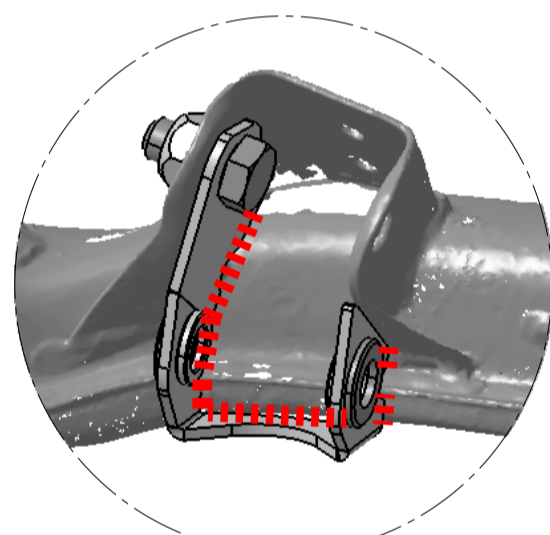
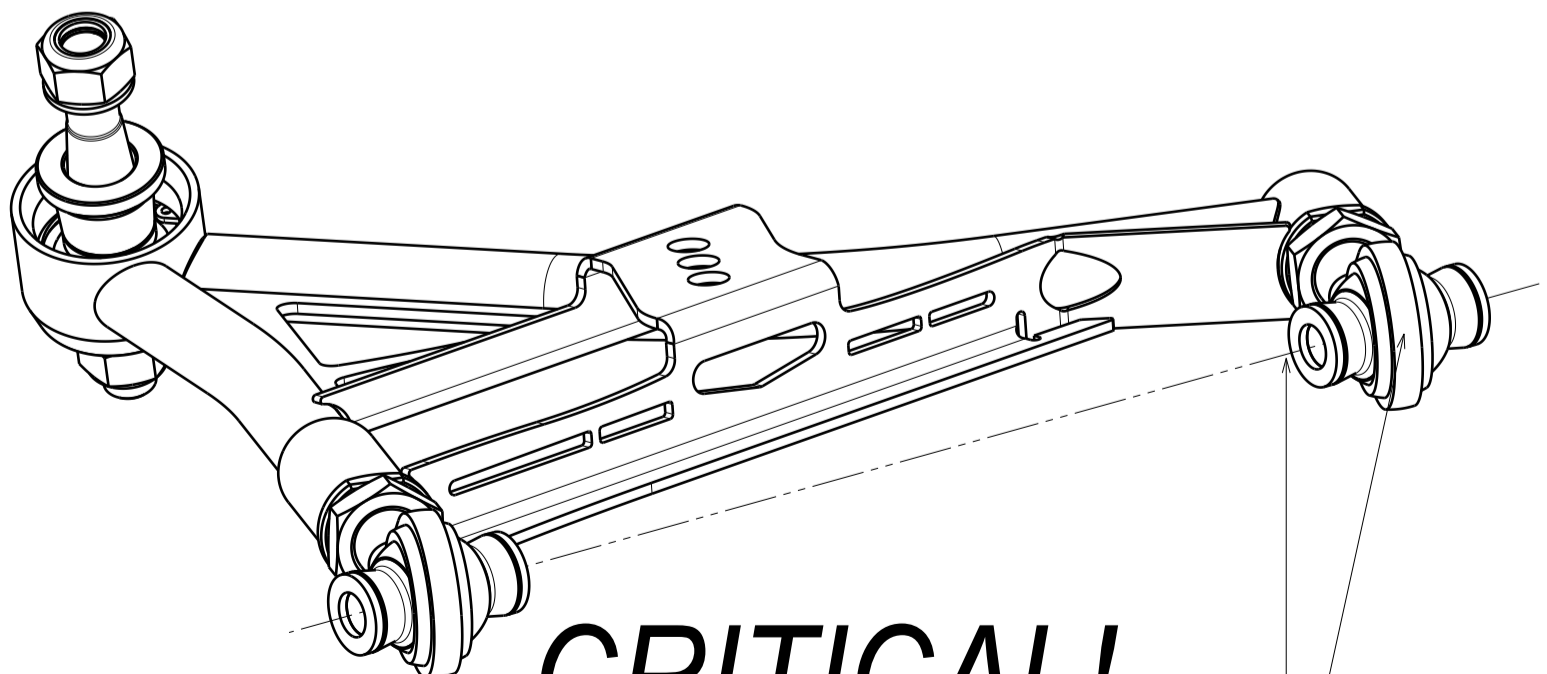


FIGURE 2



## CRITICAL!

CHECK FOR ROD END BEARING ALIGNMENT AFTER TIGHTENING THE ADJUSTING MECHANISM ROD END FACE TO BE PARALLEL TO SPACERS

LOWER A-ARM BOLT TORQUE: 90 Nm (65 LBF-FT)  
ANTI-ROLL BAR BOLT: 60 Nm (40 LB-FT)