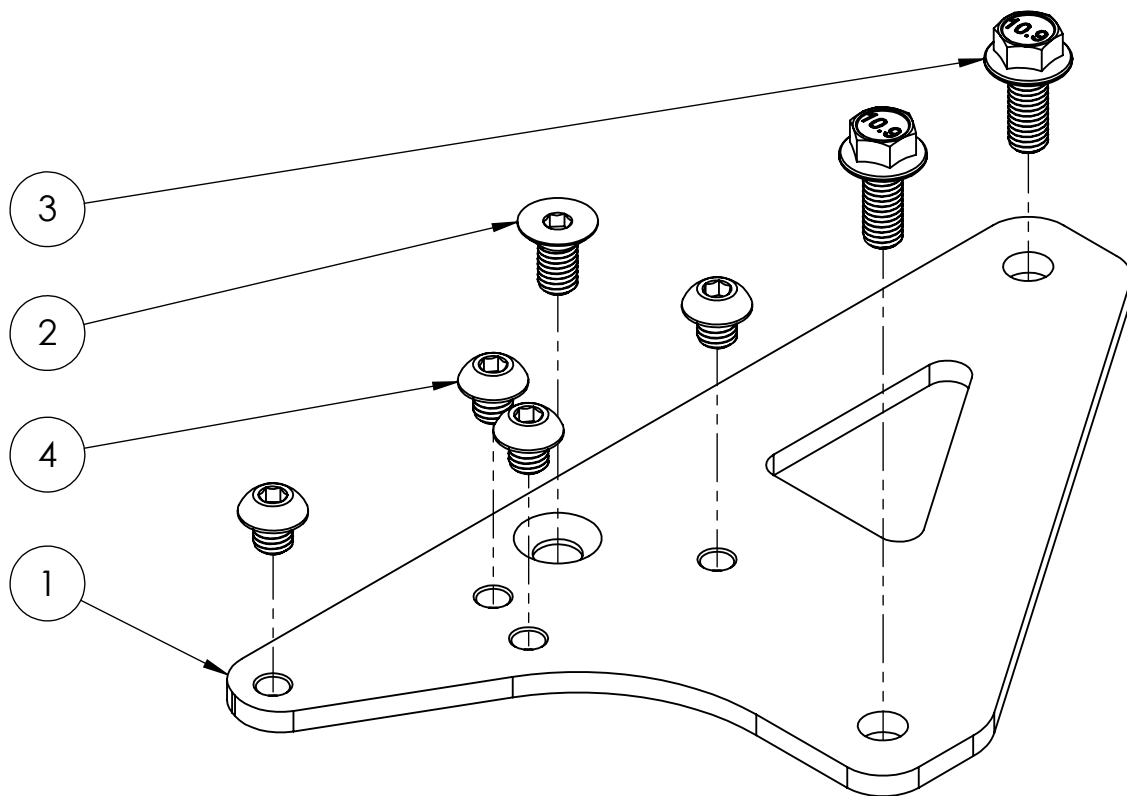


XE10-CNSL / XE10-CNSR



**LHD PICTURED*

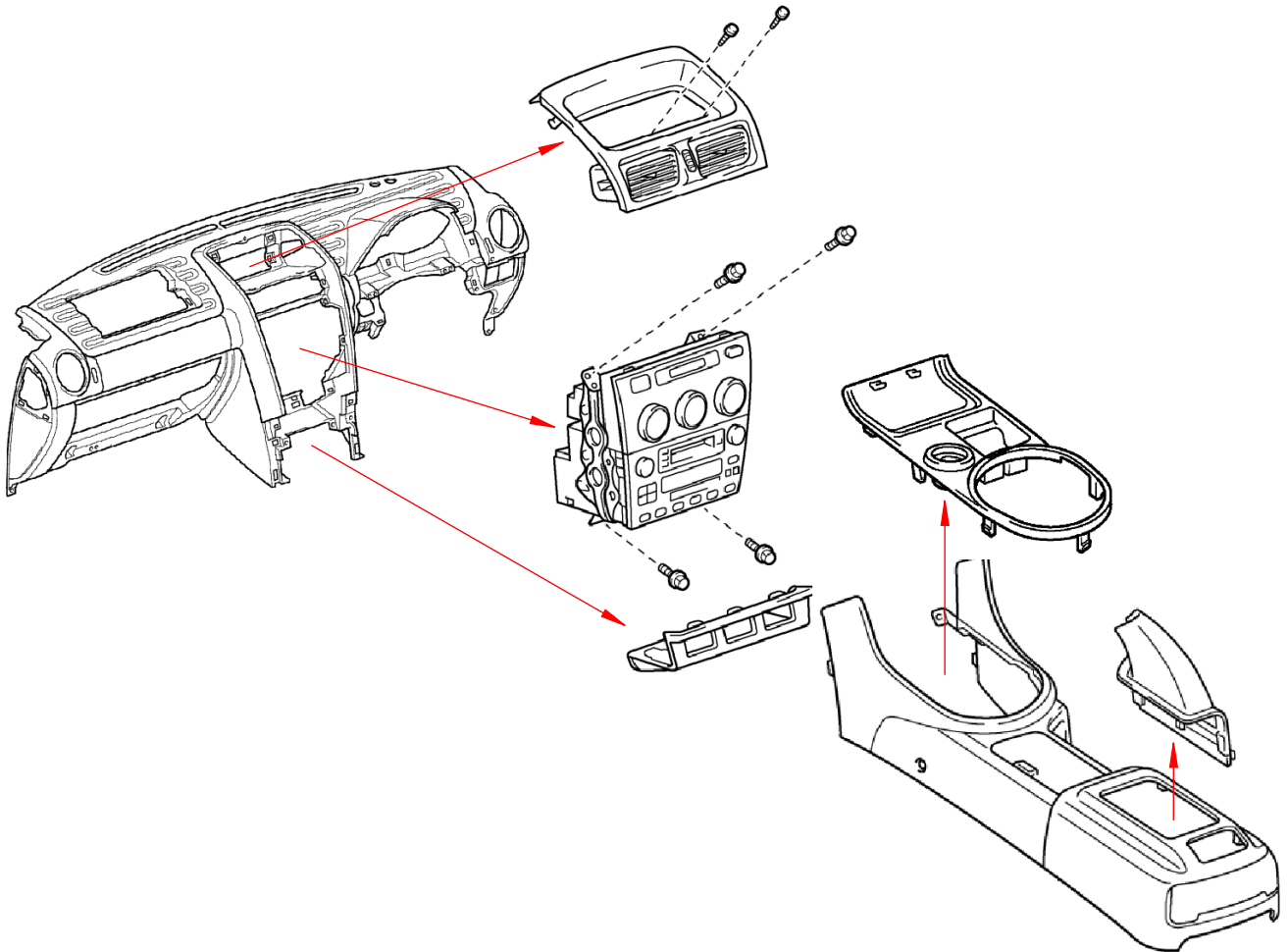
ITEM NO.	DESCRIPTION	QTY. (LHD)	QTY. (RHD)
1	XE10 Console Handbrake Mount	1	1
2	M8x1.25x16 Hex Drive Flat Head Screw	1	2
3	M8x1.25x20 Flanged Hex Head Screw	2	1
4	M8x1.25x8 Hex Drive Button Head Screw	4	4

XE10-CNSL / XE10-CNSR

1. ENSURE CAR IS OFF AND DISCONNECT THE BATTERY.

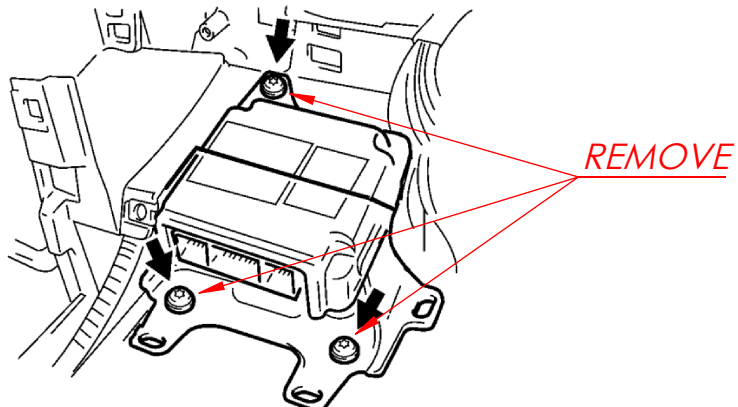
IMPORTANT - ENSURE THERE IS NO RESIDUAL CHARGE IN THE SYSTEM!

2. REMOVE TRIMS AND CENTRE CONSOLE.



3. REMOVE THE AIRBAG MODULE BY REMOVING THE 3 BOLTS AND DISCONNECTING THE 3 YELLOW CONNECTORS.

SET THE MODULE ASIDE - THE HANDBRAKE MOUNT WILL REPLACE IT.



XE10-CNSL / XE10-CNSR

THIS PAGE APPLIES TO LEFT HAND DRIVE CARS ONLY!

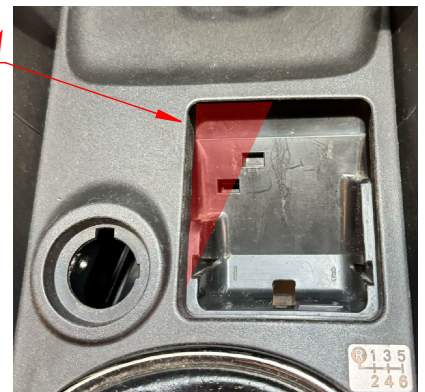
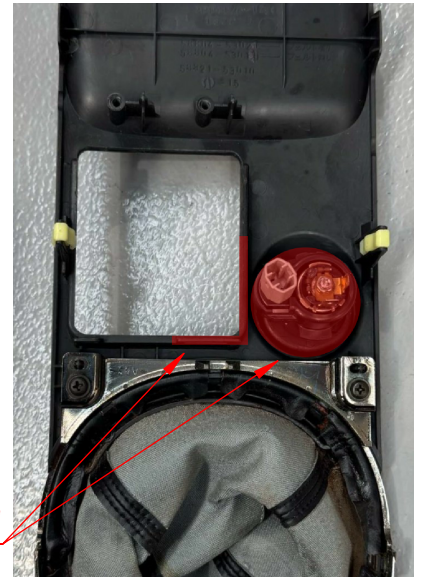
SKIP THIS PAGE IF YOU HAVE A RIGHT HAND DRIVE CAR.

4. DISCONNECT AND REMOVE THE CIGARETTE LIGHTER AND ASHTRAY ASSEMBLIES FROM THE SHIFTER SURROUND TRIM.

SET THE CIGARETTE LIGHTER ASSEMBLY ASIDE - YOU WILL NOT BE ABLE TO RUN IT WITH YOUR NEW HANDBRAKE.

USING A DREMEL OR FILE:

- ENLARGE THE CIRCULAR CIGARETTE LIGHTING OPENING TO ~48mm.
- TRIM THE ASHTRAY DOOR WALLS.
- TRIM THE LOWER ASHTRAY SUPPORT.

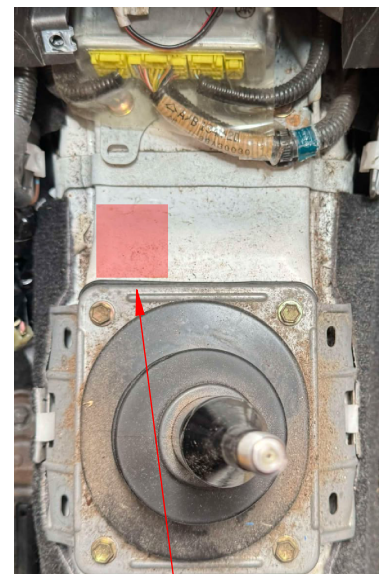


5. ON SOME **MANUAL TRANSMISSION** CARS, THE MOUNTING PLATE MAY INTERFERE WITH THE TRANSMISSION TUNNEL.

LOOSELY INSTALL THE MOUNTING PLATE AND USE A MARKER TO OUTLINE THE AREA OF THE TUNNEL THAT REQUIRES CLEARANCE.

REMOVE THE PLATE.

USING A HAMMER, GENTLY CLEARANCE THE TUNNEL UNTIL THE PLATE FITS.



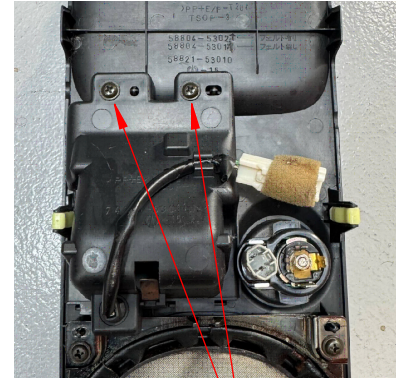
XE10-CNSL / XE10-CNSR

THIS PAGE APPLIES TO RIGHT HAND DRIVE CARS ONLY!

SKIP THIS PAGE IF YOU HAVE A LEFT HAND DRIVE CAR.

4. REMOVE THE LOWER ASHTRAY SUPPORT FROM THE SHIFTER SURROUND TRIM BY REMOVING THE TWO SCREWS.

SET THE SUPPORT ASIDE - YOU WILL NOT BE ABLE TO RUN IT WITH YOUR NEW HANDBRAKE.



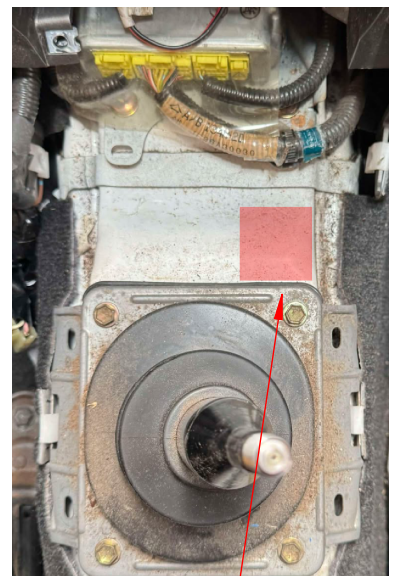
REMOVE

5. ON SOME **MANUAL TRANSMISSION** CARS, THE MOUNTING PLATE MAY INTERFERE WITH THE TRANSMISSION TUNNEL.

LOOSELY INSTALL THE MOUNTING PLATE AND USE A MARKER TO OUTLINE THE AREA OF THE TUNNEL THAT REQUIRES CLEARANCE.

REMOVE THE PLATE.

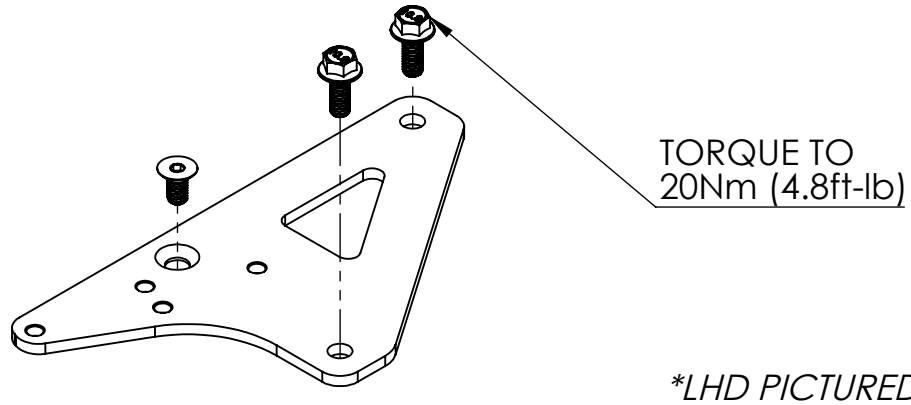
USING A HAMMER, GENTLY CLEARANCE THE TUNNEL UNTIL THE PLATE FITS.



CLEARANCE

XE10-CNSL / XE10-CNSR

6. *INSTALL THE HANDBRAKE MOUNTING PLATE TO THE OEM AIRBAG MODULE THREADS USING THE SUPPLIED HEX HEAD BOLTS AND COUNTERSUNK SCREWS.*



7. *BENCH BLEED THE MASTER CYLINDER.*
8. *INSTALL THE MASTER CYLINDER TO THE LOWX HANDBRAKE CAGE.*
9. *CONNECT THE RUBBER HOSE TO THE MASTER CYLINDER.*

YOU WILL NOT BE ABLE TO ACCESS IT ONCE THE CAGE IS INSTALLED IN THE CAR.

10. *INSTALL LOWX HANDBRAKE CAGE TO THE MOUNTING PLATE USING THE SUPPLIED BUTTON HEAD SCREWS.*

TORQUE TO 20Nm (14.8ft-lb).

TIP - USING A 5mm BALL END HEX KEYS SIMPLIFIES INSTALL.

11. *INSTALL THE HANDBRAKE LEVER.*
12. *MOUNT THE REMOTE RESERVOIR BEHIND THE HEADUNIT.*

IMPORTANT - THE RESERVOIR MUST BE MOUNTED ABOVE THE HIGHEST POINT OF THE MASTER CYLINDER.

13. *CONNECT THE RUBBER HOSE FROM THE MASTER CYLINDER TO THE REMOTE RESERVOIR.*
14. *CONNECT THE HYDRO HANDBRAKE LINE TO THE MASTER CYLINDER.*
15. *FILL THE RESERVOIR & BLEED THE SYSTEM.*

IMPORTANT - ENSURE THERE ARE NO LEAKS!

16. *REINSTALL TRIMS.*