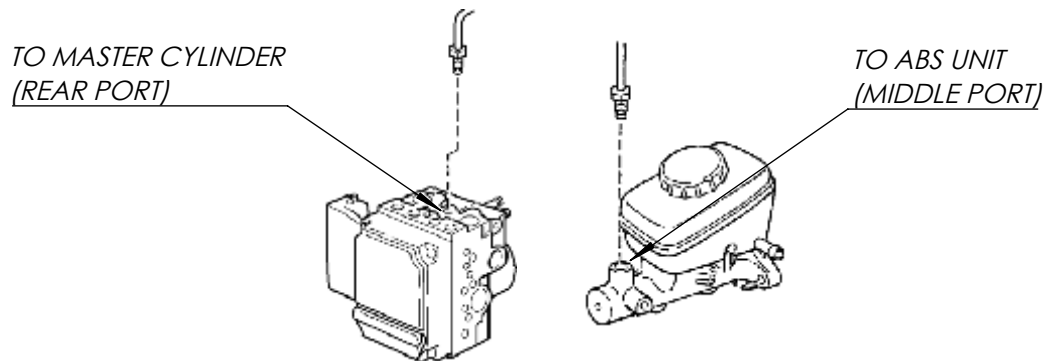
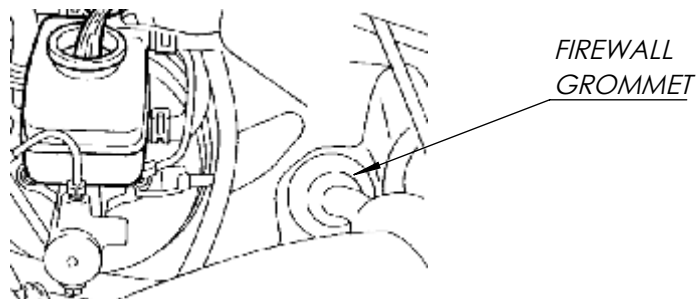


# ***XE10-LH1L & XE10-LH12***

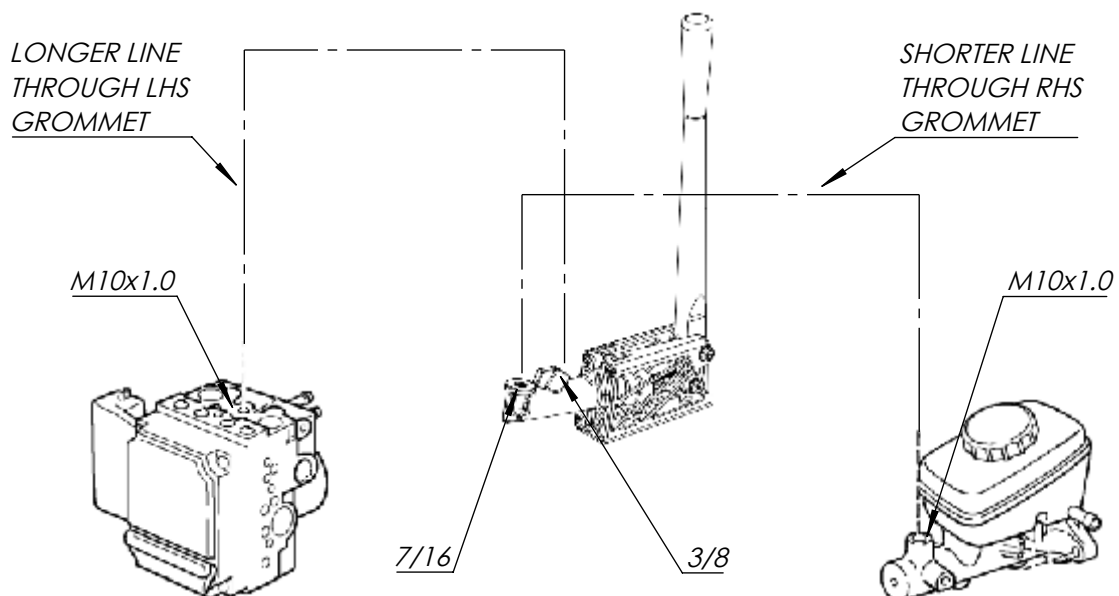
1. REMOVE THE HARDLINE CONNECTING THE REAR PORT OF THE OEM BRAKE MASTER CYLINDER TO THE MIDDLE PORT OF THE ABS UNIT.



2. CUT A SMALL SLIT INTO THE FIREWALL GROMMET, LOCATED TO THE RIGHT OF THE BRAKE MASTER CYLINDER.



3. REMOVE 2x MOUNTING NUTS TO LOOSEN ABS UNIT. LIFT UNIT TO ACCESS THE FIREWALL GROMMET AND CUT A SMALL SLIT INTO IT.
4. ROUTE THE LINES AS SHOWN BELOW:



5. **CRITICAL - CABLE TIE LINES SO THEY DO NOT INTERFERE WITH PEDALS!**
6. BLEED ALL BRAKES THOROUGHLY USING THE FOOT BRAKE.