

Z33X-DLT2

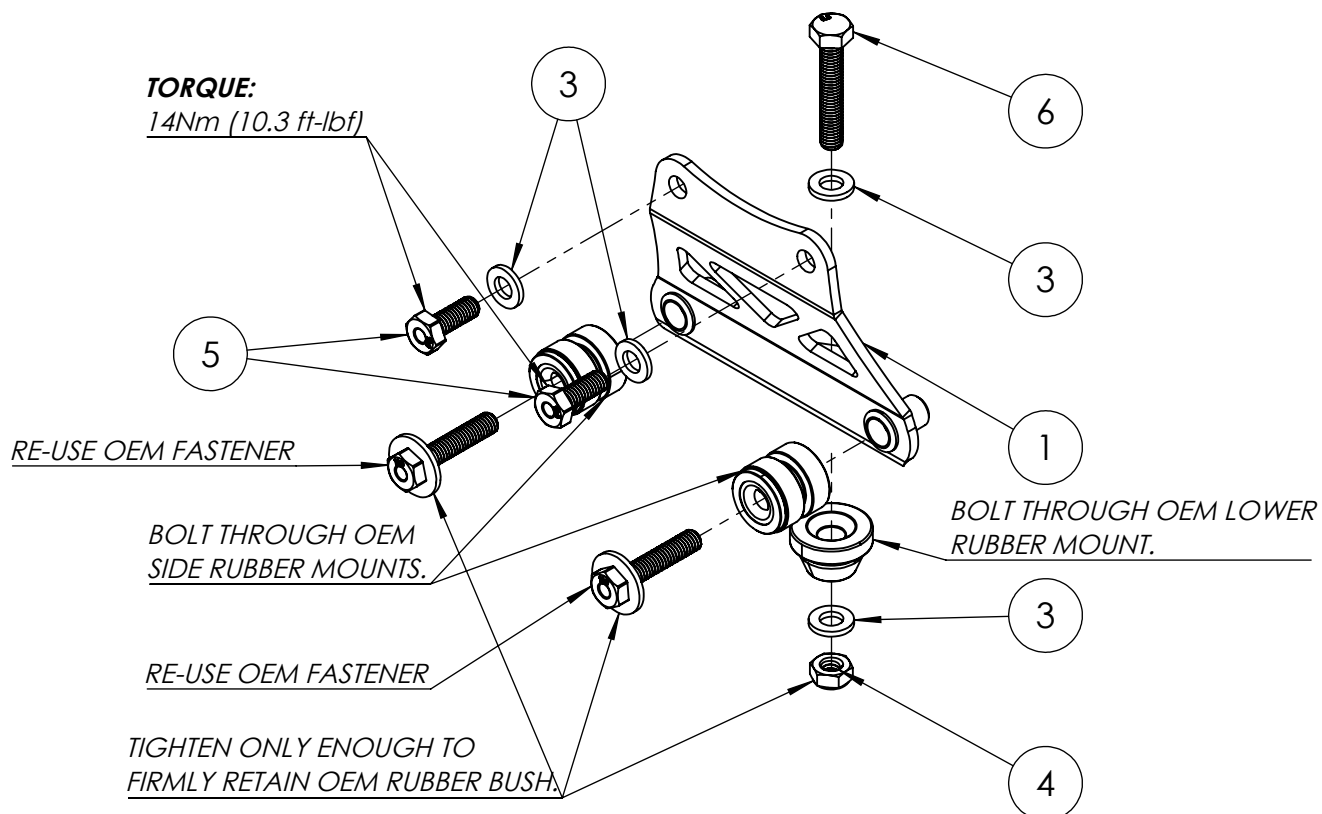


DIAGRAM A

1. DISCONNECT ELECTRONIC CONNECTORS, BRAKE LINES AND MOUNTS TO REMOVE THE OEM ABS ASSEMBLY.
2. REMOVE THE OEM RUBBER MOUNTS FROM THE BOTTOM AND SIDES OF THE ABS UNIT.
3. MOUNT THE ADAPTER BRACKET TO THE OEM MOUNTING LOCATIONS USING THE SUPPLIED HARDWARE AND THE OEM RUBBER MOUNTS AS SHOWN IN DIAGRAM A.
4. USE THE SHORT M6 BOLTS AND WASHERS TO MOUNT MANIFOLD TO ADAPTER BRACKET.
5. REFER TO ABS DELETE MANIFOLD ASSEMBLY GUIDE FOR REMAINING MOUNTING STEPS.

ITEM NO.	PART NUMBER:	QTY:
1	GK.2127.01.00.00	1
2	M6 X 1.0 STAINLESS STEEL RIVET NUT	2
3	M6X12X1.6 WASHER	4
4	M6X1.0 SPRING STOP LOCKNUT	1
5	M6X1.0X16 HEX	2
6	M6X1.0X35 HEX	1
7	M6X17.7X1.6 WASHER	2
8	M6X1.0X30 HEX	2
9	Z34 OEM LOWER MOUNT	1
10	Z34 OEM SIDE MOUNT	2

Z33X-DLTA

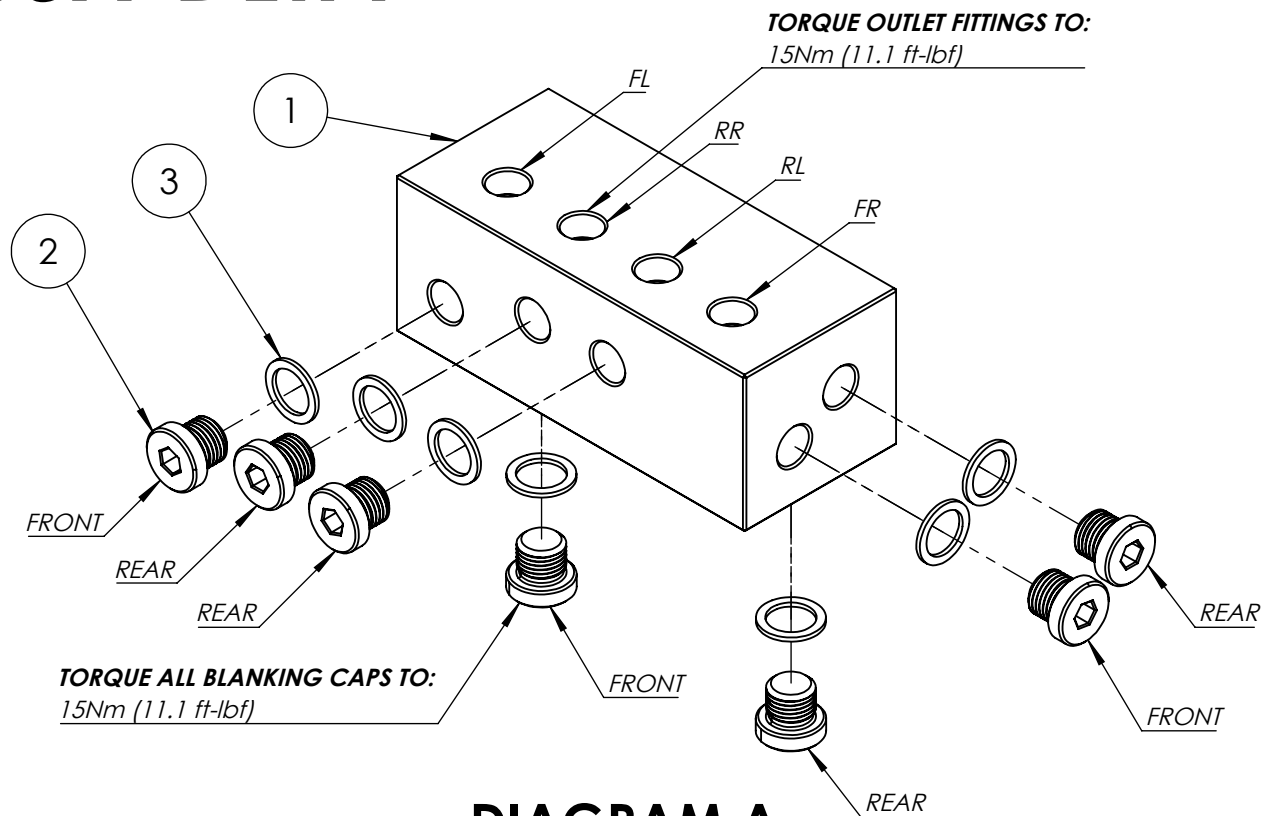
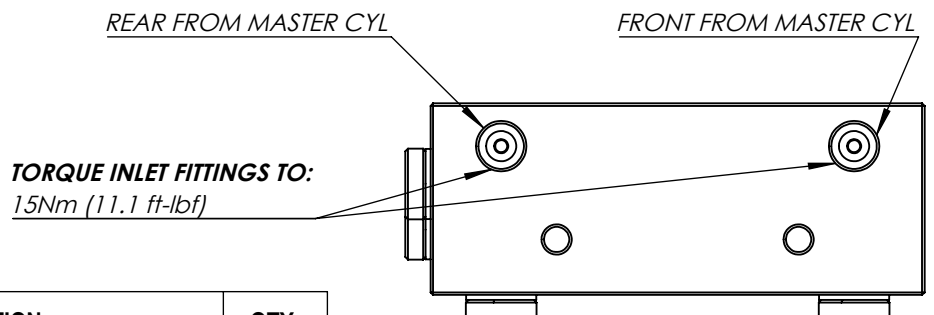


DIAGRAM A

1. TORQUE ALL BLANKING CAPS ON TO THE MANIFOLD BEFORE INSTALLING IN THE VEHICLE.

(BLANKING CAPS CAN BE REPLACED WITH M10 x 1 BRAKE PRESSURE SENSORS AS DESIRED. SEE DIAGRAM A FOR DETAILS AS TO WHICH BLANKING CAPS SERVICE THE FRONT OR REAR LINES.)

2. INSTALL ABS DELETE MANIFOLD INTO VEHICLE USING PROVIDED MOUNTING BRACKET.
3. ATTACH AND TIGHTEN EACH OF THE BRAKE LINES TO THEIR RESPECTIVE INLET / OUTLET.
4. BLEED VEHICLE BRAKES. APPLY MAXIMUM BRAKE PRESSURE AND CHECK SYSTEM FOR LEAKS, TIGHTEN ACCORDINGLY.



ITEM:	DESCRIPTION:	QTY:
1	TYPE-B ABS DELETE MANIFOLD	1
2	M10 X 1 BLANKING CAP	7
3	M10 CRUSH WASHER	7