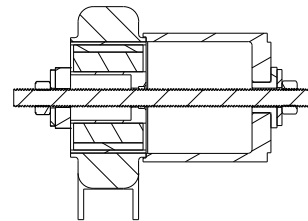


8	1	OEM DIFF BUSH
7	1	Z34 SUBFRAME
6	2	M12 x 1.75 NUT
5	2	M12 WASHER
4	1	M12 x 1.75 x 200 ROD
3	1	INNER REMOVER
2	1	M12 CONVERSION SPACER
1	1	Z34 DIFF BUSH REMOVER BODY
Item	Qty	Part Number
Parts List		

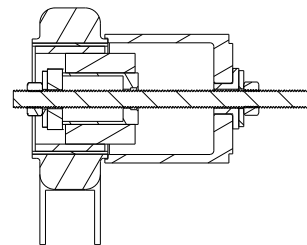
INNER BUSH REMOVAL

**** The OEM diff bush is a fluid filled style bush. Please ensure caution is excersised while seperating the inner part of the bush ****

- Step 1. Apply grease/lube to both nuts and rod
- Step 2. Install all M12 components as shown in exploded diagram
- Step 3. Support the front nut with a spanner and use a deep socket on the rear, begin tightening.

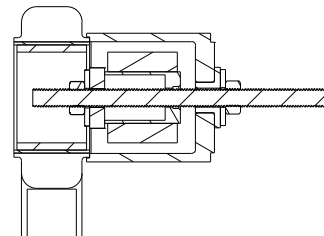


- Step 4. Nuts may need to be loosened partway through the process and the rod adjusted to ensure the deep socket continues to make contact with the rear nut.



This is also a good time to reapply lubrication

- Step 5. Continue to pull inner bush through until it seperates from the outer shell of the OEM bush completely.



FRONT