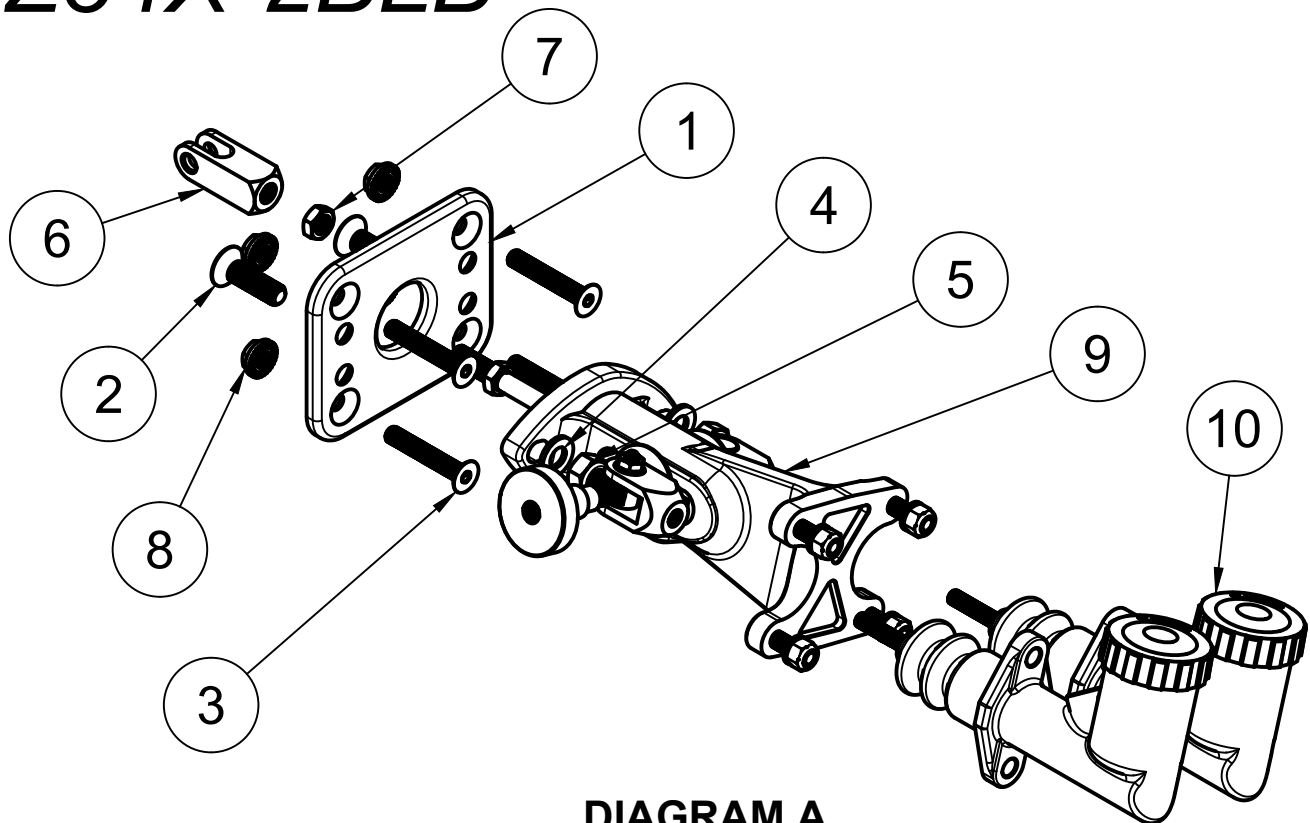


# Z34X-2BLB

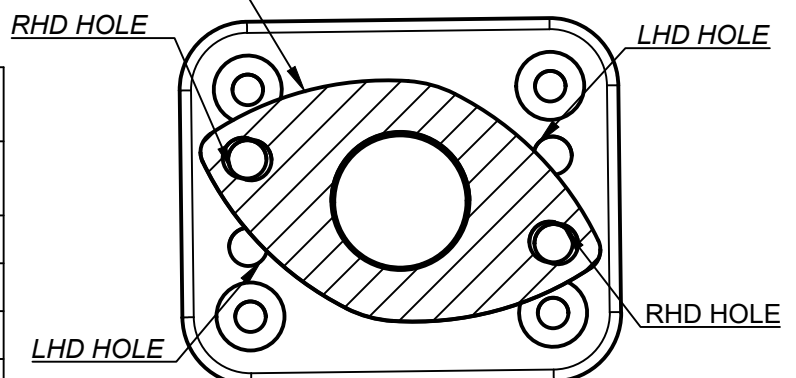


**DIAGRAM A**

1. REMOVE THE BRAKE PEDAL ASSEMBLY AND BRAKE BOOSTER ASSEMBLY FROM THE VEHICLE.
2. USE DIAGRAM C TO LOCATE THE PIVOT PIN WHICH WILL BE MODIFIED. CAREFULLY REMOVE THE CIRCLIP, PIVOT PIN, AND BRASS BUSHES FROM THE PEDAL ASSEMBLY. PLACE THEM TO ONE SIDE AS THEY WILL BE RE-USED DURING RE-ASSEMBLY.

**\*CRITICAL\* THE PEDAL ASSEMBLY WILL NEED TO BE MODIFIED TO CHANGE THE PEDAL RATIO TO WORK WITH A NON-BOOSTED BRAKE ASSEMBLY.**

USE ONE UPPER AND ONE LOWER HOLE TO CREATE ANGLE

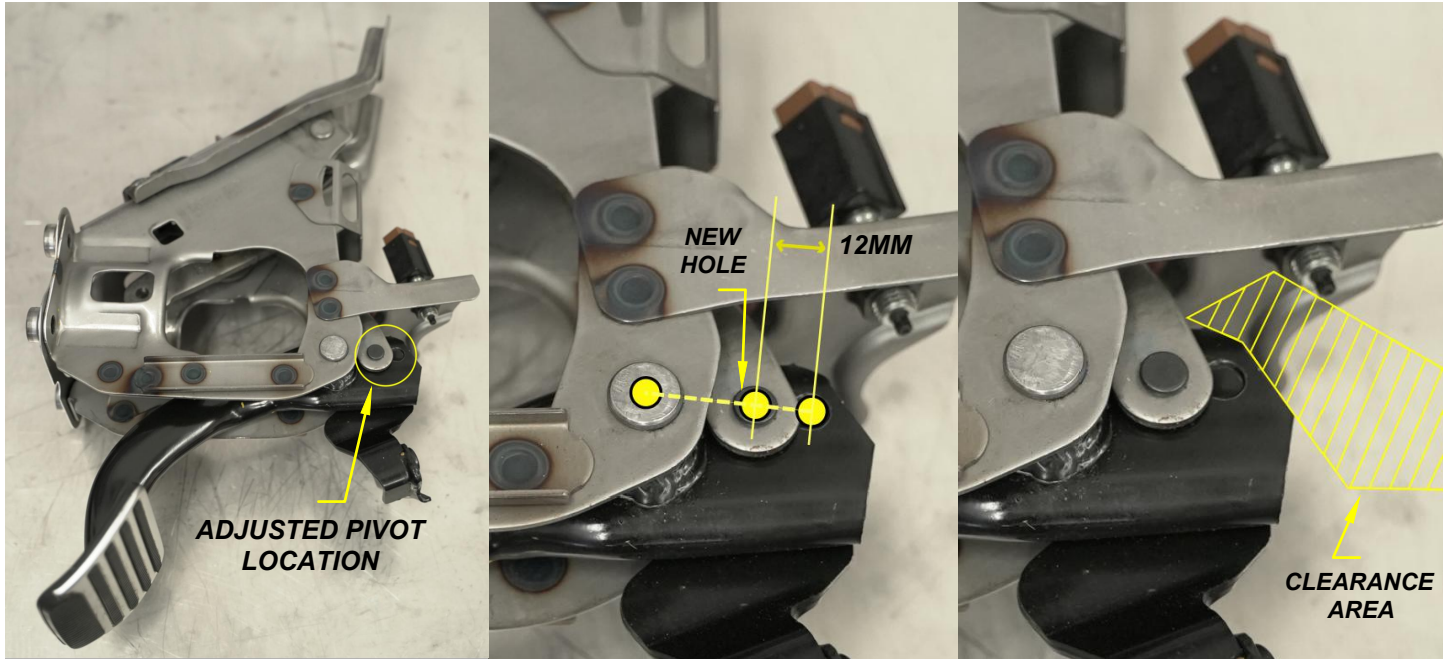


(TILT ANGLE ALLOWS CLEARANCE TO THE STRUT TOWER)

**DIAGRAM B**

10	FLUX RESERVOIR MASTER CYLINDERS	2
9	WILWOOD TANDEM MOUNT BALANCE BAR	1
8	M8 FLANGE NUT	4
7	3/8 THIN NUT	1
6	370z ADJUSTED RATIO CLEVIS	1
5	M10 NYLOC	2
4	M10 WASHER	2
3	M8 x 50	4
2	M10 x 35	2
1	370z ADAPTER PLATE	1
<b>ITEM:</b>	<b>DESCRIPTION:</b>	<b>QTY:</b>
<b>PARTS LIST</b>		

# Z34X-2BLB



**DIAGRAM C**

**DIAGRAM D**

**DIAGRAM E**

3. CAREFULLY MEASURE AND MARK THE LOCATION OF THE NEW HOLE AS 12MM AWAY FROM THE OEM HOLE ON THE LINE BETWEEN THE OEM HOLE AND THE PIVOT (DIAGRAM D).
4. USE A PUNCH TO MARK THIS LOCATION AND DRILL A NEW HOLE WITH 8MM DIAMETER. **DO NOT LET THE HOLE DIAMETER EXCEED 8MM.** THIS WILL CAUSE SLOP IN THE BRAKE PEDAL.
5. USE A GRINDER TO CLEARANCE THE PEDAL PIVOT AS SHOWN IN DIAGRAM E.
6. RE-INSTALL THE BRASS BUSHES, PIN AND CIRCLIP INTO THE NEW HOLE.
7. ARTICULATE THE BRAKE PEDAL THROUGH THE FULL RANGE OF MOTION TO ENSURE THAT THERE IS ADEQUATE CLEARANCE WHERE THE GRINDER WAS USED. REPEAT STEPS 5-7 IF NECESSARY.
8. INSERT ALL 4 OF THE M8 x 50 BOLTS IN TO THE ADAPTER PLATE. THEN BOLT THE WILWOOD BALANCE BAR ASSEMBLY TO THE ADAPTER, SANDWICHING THE M8 BOLTS IN PLACE.
9. BENCH BLEED BOTH MASTER CYLINDERS. DEPENDING UPON MASTER CYLINDER VARIETY, THE MASTER CYLINDER SHAFTS MAY ALSO NEED TO BE TRIMMED DOWN.
10. TEST FIT THE BALANCE BAR ASSEMBLY TO THE BRAKE PEDAL ON THE BENCH. THREAD BOTH THE MASTER CYLINDERS EVENLY AND FULLY ON TO THE BALANCE BAR CLEVISSES AND ADJUST THE PEDAL CLEVIS AND LOCK USING THE JAM NUT.  
**\*\*CRITICAL\*\* CONFIRM PEDAL TRAVEL AND RETURN POSITION BEFORE CONTINUING.**
11. WHILE HOLDING THE BRAKE PEDAL IN POSITION IN THE FOOTWELL, GET SOMEONE TO INSERT THE BALANCE BAR ASSEMBLY FROM THE ENGINE BAY.
12. INSERT PEDAL CLEVIS PIN AND CLIP FIRST, THEN TIGHTEN ALL REMAINING NUTS. MAKE FINE ADJUSTMENTS USING THE MASTER CYLINDER SHAFTS TO TAKE UP ANY SLACK.
13. ATTACH BRAKE LINES AND BLEED THE BRAKES.