

# Z34X-FUCA

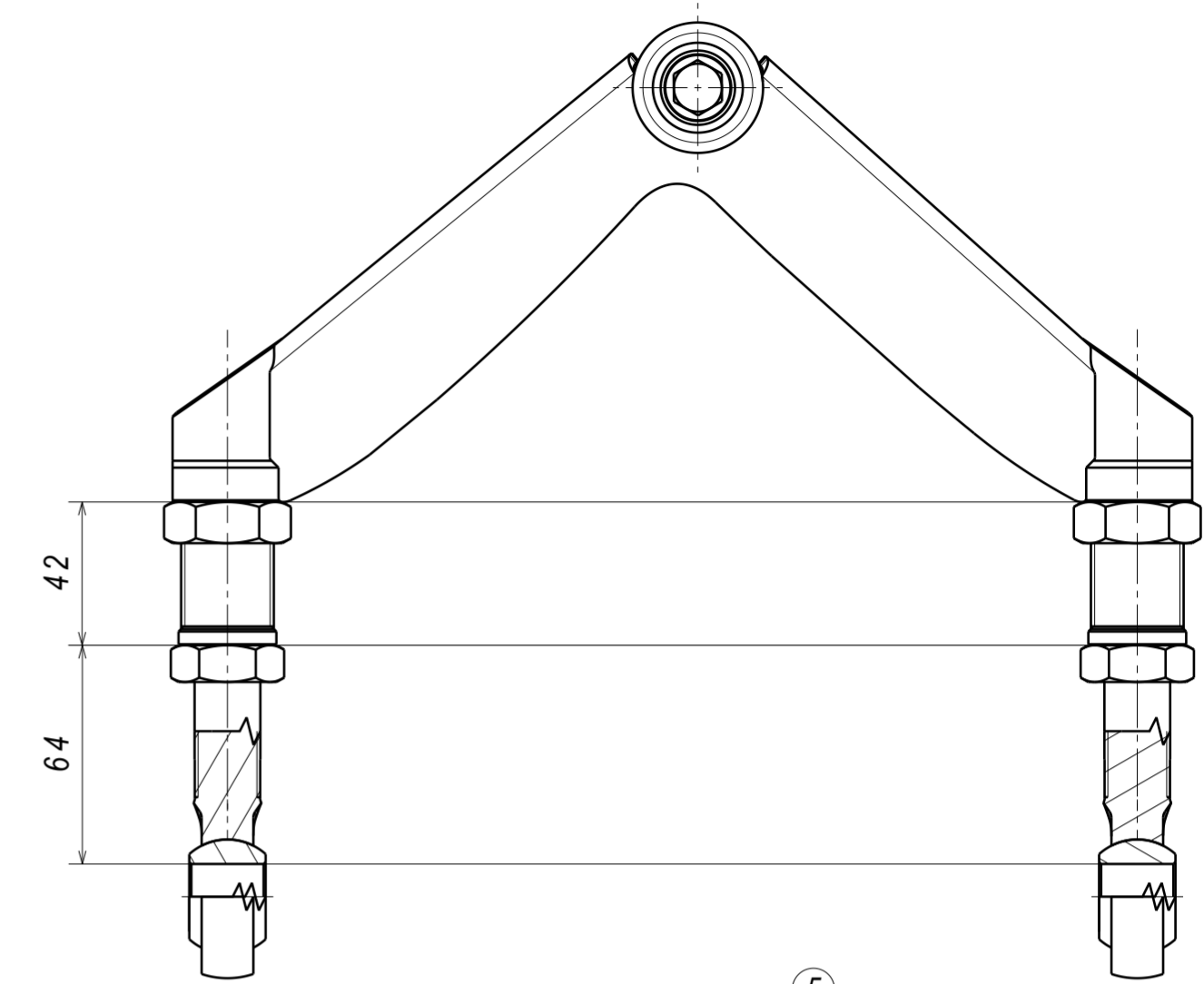
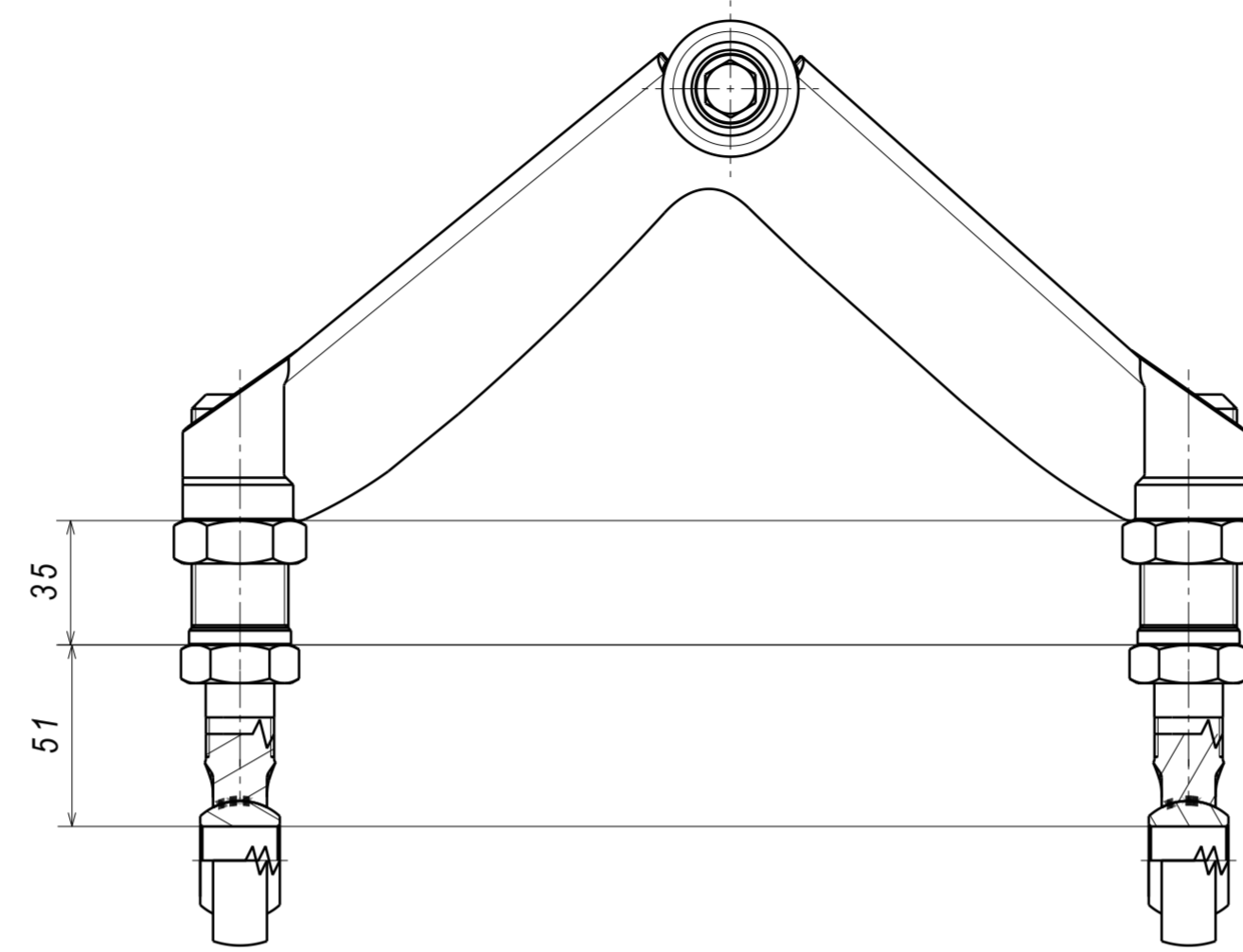
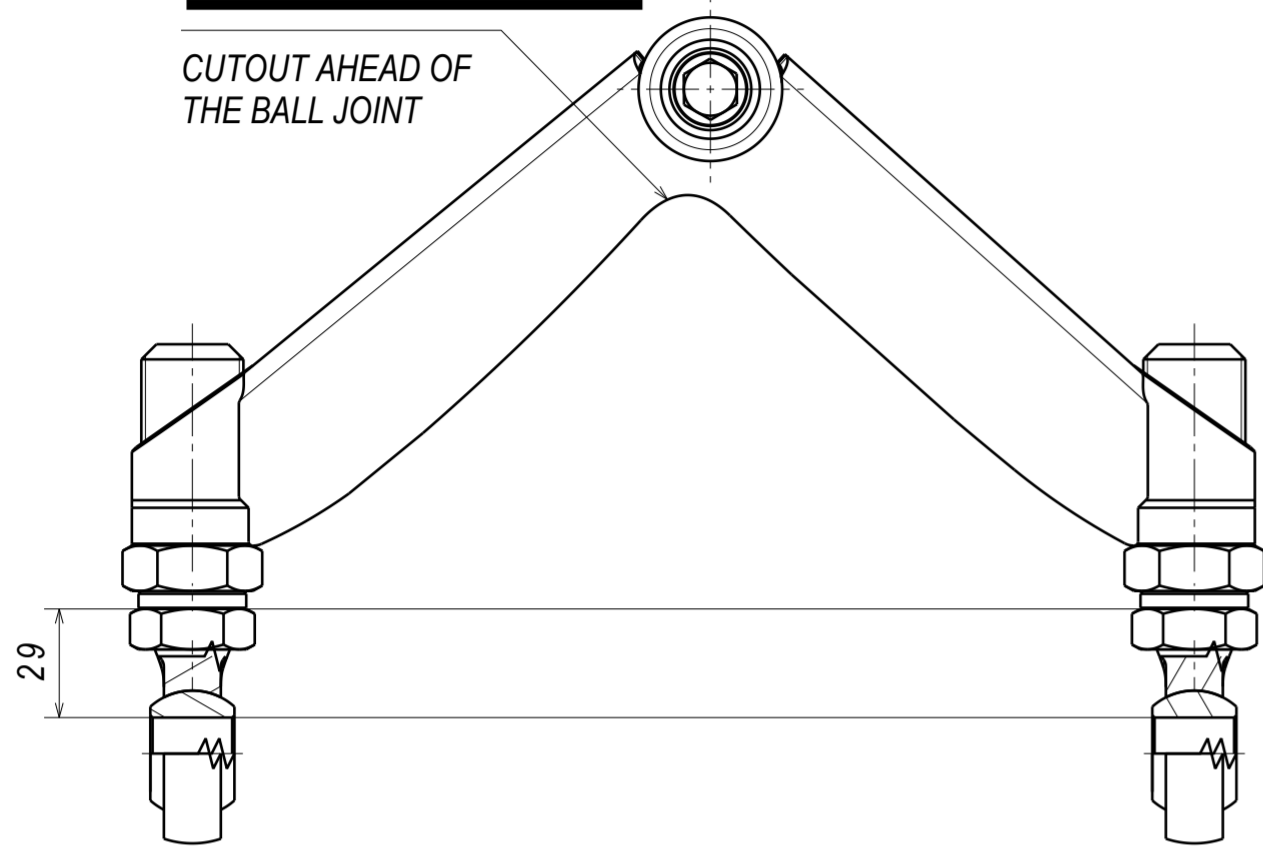
MIN LENGTH

OEM LENGTH

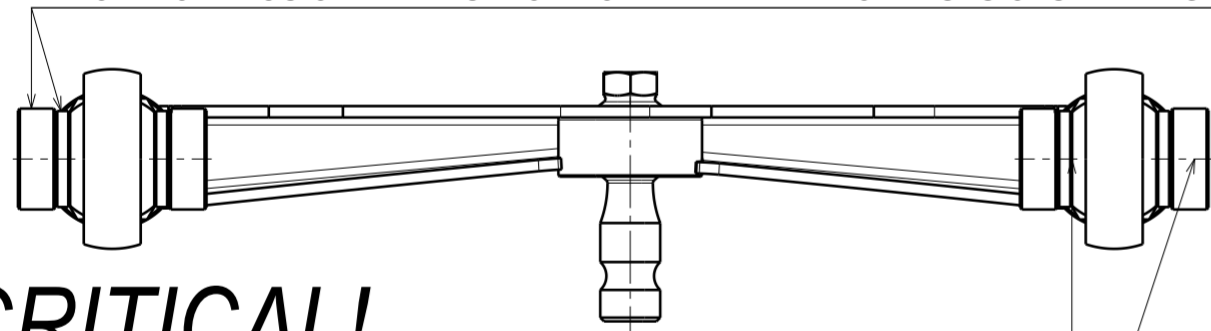
MAX LENGTH

**DIRECTIONAL FITMENT REQUIRED -  
FACING FRONT**

CUTOUT AHEAD OF  
THE BALL JOINT



CASTER ANGLE IS ADJUSTABLE BY 1° VIA CHANGING THE STACK OF THE SPACERS  
TWO THICK PLUS ONE THIN SPACER ON THE FRONT INCREASES CASTER ANGLE  
TWO THICK PLUS ONE THIN SPACER ON THE REAR DECREASES CASTER ANGLE



**CRITICAL!**

CHECK FOR ROD END BEARING ALIGNMENT AFTER TIGHTENING  
THE JAM NUT ROD END AXIS TO BE PARALLEL TO THE AXIS OF  
THE SPACERS

12	FLCA M27x2 JAM NUT	2
11	VERNIER SLEEVE - M27x 3/4 REAR DRIVE	2
10	350Z UPPER A-ARM SPACER - THIN	4
9	350Z UPPER A-ARM SPACER - THICK	4
8	QA1 PCML12T BOOT REV2	2
7	ROD END BEARING PCML12T-E	2
6	ASTM A563 3/4-16 LH GRADE A ZN(HEIGHT 10,7mm)	2
5	350Z FRONT UPPER A-ARM BEARING BOLT	1
4	370Z FRONT UPPER A-ARM STUD	1
3	CIRCLIP DIN 472 30x1.2	1
2	SPHERICAL BEARING COM10T	1
1	370Z FRONT UPPER A-ARM WELDING ASSEMBLY R/H	1
PC NO	COMPONENT NAME	QTY

