

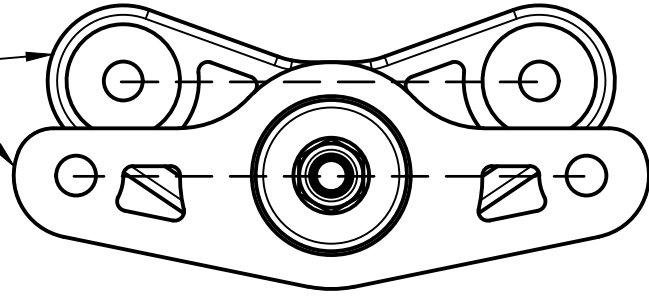
Z34X-SGBM

1/2

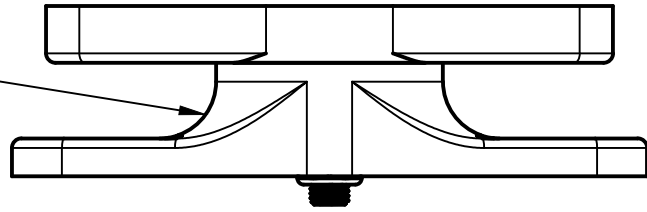
CRITICAL!

1. Upper and lower body to be parallel as shown

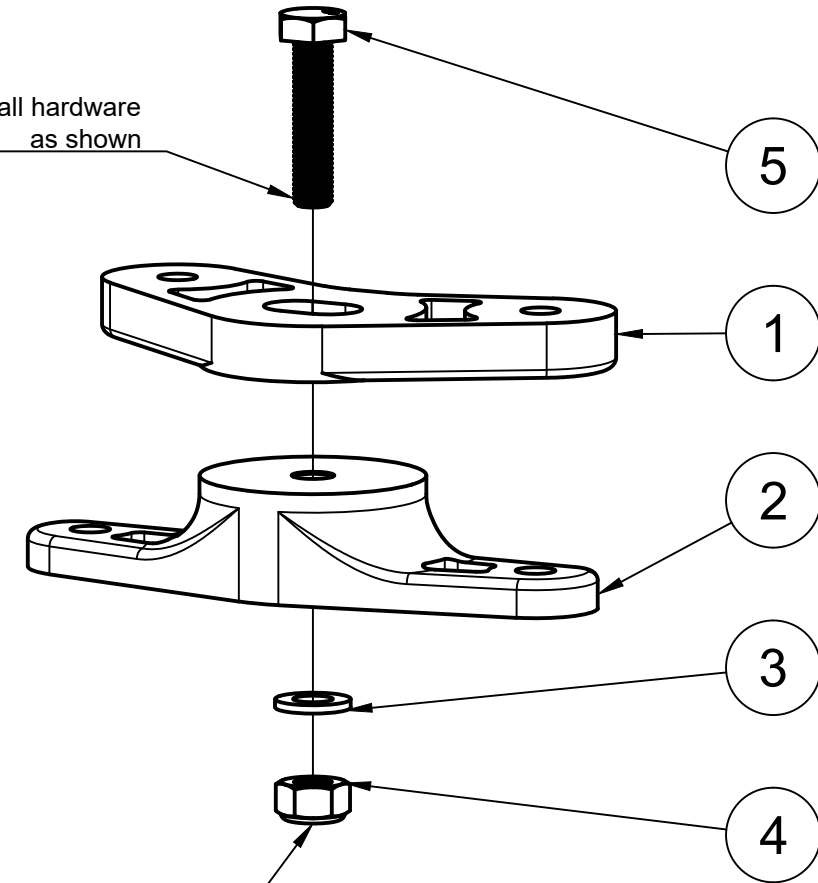
FRONT
↑



2. Larger part of lower mount to be facing towards upper mount



3. Install hardware as shown



4. Torque to 52 Nm (38 ft lb)

5	1	M10 x 1.25 x 45 Bolt
4	1	M10 x 1.25 Nylon Nut
3	1	M10 Washer
2	1	370 SG Lower Body
1	1	370 SG Upper Body
Item	Qty	Description
Parts List		